

\$325,000 - 9003 Alberta (101) Avenue, Lac La Biche

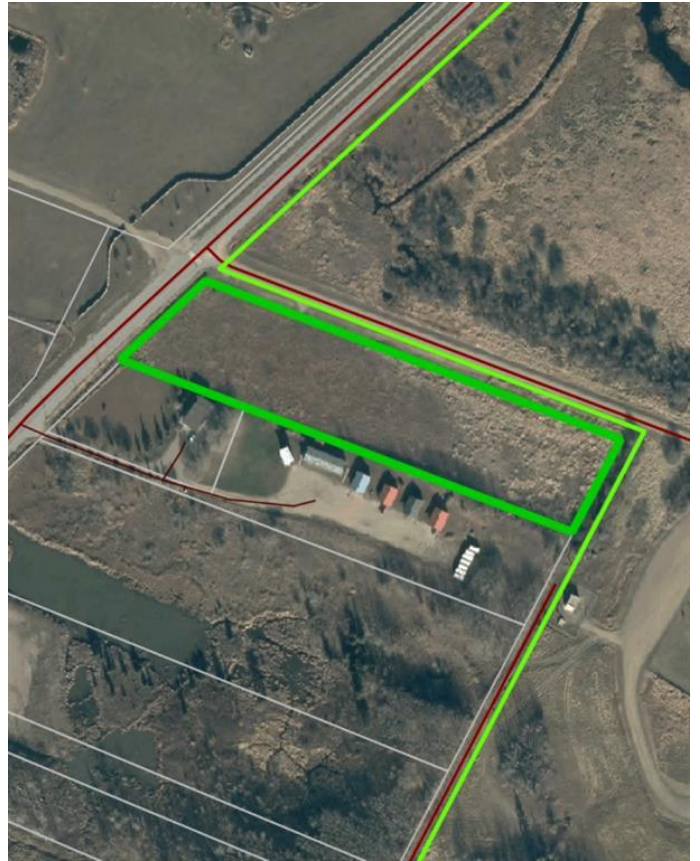
MLS® #A2101005

\$325,000

0 Bedroom, 0.00 Bathroom,
Commercial on 0.00 Acres

Lac La Biche, Lac La Biche, Alberta

4.42 acre commercial property located on the outskirts of Lac La Biche heading East towards the Lac La Biche Golf Course. This property has lakeview and is adjacent to the Alexander Hamilton Park. Services include water and sewer stubbed as well as power and gas available. The property is cleared and ready for development and is surrounding by commercial chain link fence.



Essential Information

MLS® #	A2101005
Price	\$325,000
Bathrooms	0.00
Acres	0.00
Type	Commercial
Sub-Type	Industrial
Status	Active

Community Information

Address	9003 Alberta (101) Avenue
Subdivision	Lac La Biche
City	Lac La Biche
County	Lac La Biche County
Province	Alberta
Postal Code	T0A 2C0

Additional Information

Date Listed	January 10th, 2024
-------------	--------------------



Days on Market 667
Zoning Arterial Commercial/Shopp

Listing Details

Listing Office RE/MAX LA BICHE REALTY

Data is supplied by Pillar 9â„¸ MLSÂ® System. Pillar 9â„¸ is the owner of the copyright in its MLSÂ® System. Data is deemed reliable but is not guaranteed accurate by Pillar 9â„¸. The trademarks MLSÂ®, Multiple Listing ServiceÂ® and the associated logos are owned by The Canadian Real Estate Association (CREA) and identify the quality of services provided by real estate professionals who are members of CREA. Used under license.