

\$845,000 - 1110 1 Avenue E, Bow Island

MLS® #A2157225

\$845,000

0 Bedroom, 0.00 Bathroom,
Land on 19.92 Acres

NONE, Bow Island, Alberta

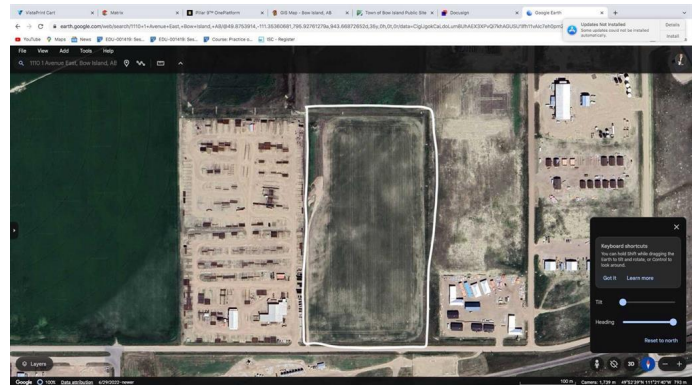
Seize the opportunity to invest in 19.92 acres of industrial land in Bow Island. This expansive 19 acre parcel offers endless potential for development in a strategic location, making it a prime choice for businesses looking to establish or expand operations in the area. Located in a thriving community with a strong agricultural and industrial base, this property is perfect for a wide range of industrial uses. With easy access to major transportation routes, your business will benefit from excellent connectivity to regional and international markets. This is a rare chance to acquire a significant piece of industrial land in a market with limited availability. Whether you're looking to build from the ground up or hold as a long-term investment, this property is a valuable asset with immense potential.

Essential Information

MLS® #	A2157225
Price	\$845,000
Bathrooms	0.00
Acres	19.92
Type	Land
Sub-Type	Industrial Land
Status	Active

Community Information

Address	1110 1 Avenue E
---------	-----------------



Subdivision	NONE
City	Bow Island
County	Forty Mile No. 8, County of
Province	Alberta
Postal Code	T0K 0G0

Additional Information

Date Listed	August 13th, 2024
Days on Market	342
Zoning	M-2

Listing Details

Listing Office	RE/MAX MEDALTA REAL ESTATE
----------------	----------------------------

Data is supplied by Pillar 9â„¢ MLS® System. Pillar 9â„¢ is the owner of the copyright in its MLS® System. Data is deemed reliable but is not guaranteed accurate by Pillar 9â„¢. The trademarks MLS®, Multiple Listing Service® and the associated logos are owned by The Canadian Real Estate Association (CREA) and identify the quality of services provided by real estate professionals who are members of CREA. Used under license.