

# \$115,000 - On #2/35 Highway, Rural Peace No. 135, M.D. of

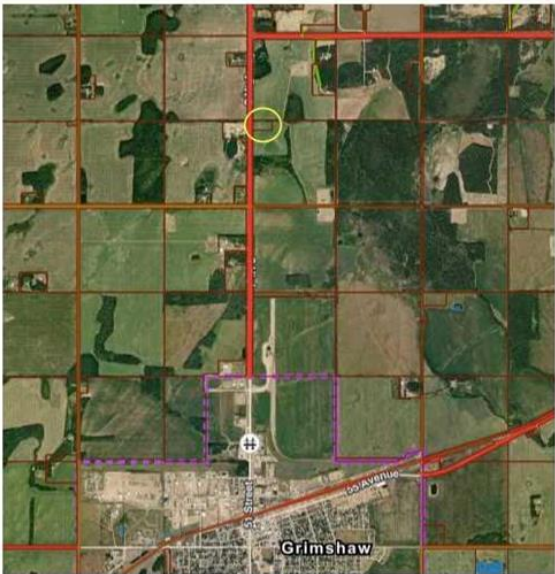
MLS® #A2177889

**\$115,000**

0 Bedroom, 0.00 Bathroom,  
Land on 4.15 Acres

NONE, Rural Peace No. 135, M.D. of, Alberta

Great opportunity to build your dream home!  
Minutes from Grimshaw with highway frontage  
so no gravel to travel. This acreage has an  
existing water well but is otherwise a blank  
slate so you will have minimal work to  
complete prior to building or bringing a home  
in. Site is not treed so you can plant them  
wherever you like! Power and gas lines are  
close by so easy to bring onto the property.



## Essential Information

|           |                  |
|-----------|------------------|
| MLS® #    | A2177889         |
| Price     | \$115,000        |
| Bathrooms | 0.00             |
| Acres     | 4.15             |
| Type      | Land             |
| Sub-Type  | Residential Land |
| Status    | Active           |

## Community Information

|             |                              |
|-------------|------------------------------|
| Address     | On #2/35 Highway             |
| Subdivision | NONE                         |
| City        | Rural Peace No. 135, M.D. of |
| County      | Peace No. 135, M.D. of       |
| Province    | Alberta                      |
| Postal Code | T0H 1W0                      |



## Additional Information

|                |                          |
|----------------|--------------------------|
| Date Listed    | November 6th, 2024       |
| Days on Market | 271                      |
| Zoning         | CR - Country Residential |

**Listing Details**

|                |                        |
|----------------|------------------------|
| Listing Office | RE/MAX Northern Realty |
|----------------|------------------------|

Data is supplied by Pillar 9â„¢ MLSÂ® System. Pillar 9â„¢ is the owner of the copyright in its MLSÂ® System. Data is deemed reliable but is not guaranteed accurate by Pillar 9â„¢. The trademarks MLSÂ®, Multiple Listing ServiceÂ® and the associated logos are owned by The Canadian Real Estate Association (CREA) and identify the quality of services provided by real estate professionals who are members of CREA. Used under license.