

# \$1,129 - 206, 9932 105 Avenue, Grande Prairie

MLS® #A2181460

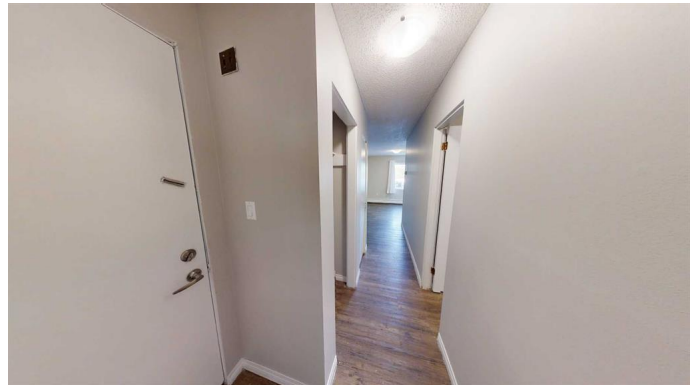
**\$1,129**

0 Bedroom, 1.00 Bathroom, 490 sqft

Rental on 0.00 Acres

VLA Montrose, Grande Prairie, Alberta

Bachelor unit in Montrose Apartments!  
Conveniently located bachelor 1 bath apartment. Unit features entry closet, storage room/pantry, and newer vinyl plank floors. Good sized living space, storage room and 4 piece bathroom.  
The building features keyless fob entry, door buzzer, security cameras and security patrols. Onsite coin laundry. Rent includes water and heat. Above ground parking available for \$10/mo.  
Cat friendly with \$50/mo pet fee. Enjoy the perks of living in this central location. Close to Muskoseepi Park and walking distance to the public library. Close to four schools and public transportation. Renter will enjoy the convenience of a central location with restaurants and local shopping close by. Powered above ground parking stall available for \$10/mo.



## Essential Information

MLS® #	A2181460
Price	\$1,129
Bathrooms	1.00
Full Baths	1
Square Footage	490
Acres	0.00
Type	Rental
Status	Active

**Community Information**

Address	206, 9932 105 Avenue
Subdivision	VLA Montrose
City	Grande Prairie
County	Grande Prairie
Province	Alberta
Postal Code	T8V1G9

**Amenities**

Parking	Stall
---------	-------

**Interior**

Appliances	Oven, Refrigerator, Range Hood, Stove(s)
------------	--

**Exterior**

Roof	Asphalt Shingle
------	-----------------

**Additional Information**

Date Listed	November 28th, 2024
Days on Market	245

**Listing Details**

Listing Office	Grassroots Realty Group Ltd.
----------------	------------------------------

Data is supplied by Pillar 9â„¢ MLS® System. Pillar 9â„¢ is the owner of the copyright in its MLS® System. Data is deemed reliable but is not guaranteed accurate by Pillar 9â„¢. The trademarks MLS®, Multiple Listing Service® and the associated logos are owned by The Canadian Real Estate Association (CREA) and identify the quality of services provided by real estate professionals who are members of CREA. Used under license.