

\$179,000 - 9 West Hill Drive, Rural Peace No. 135, M.D. of

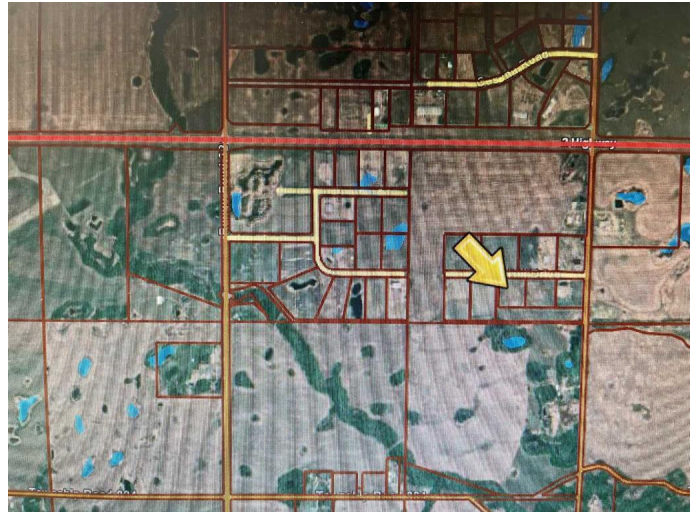
MLS® #A2183285

\$179,000

0 Bedroom, 0.00 Bathroom,
Land on 4.10 Acres

NONE, Rural Peace No. 135, M.D. of, Alberta

This property offers a fantastic opportunity for industrial development! Located on the West Hill, just minutes from Peace River's town limits and conveniently accessible from Highway 2, this 4.1-acre lot is zoned Rural Industrial. Its zoning allows for a wide range of industrial uses, such as equipment storage, trucking, or constructing a new shop to suit your business needs. The combination of location, accessibility, and versatility makes it an ideal spot for your next project. Freshly cleared and ready for development.



Essential Information

MLS® #	A2183285
Price	\$179,000
Bathrooms	0.00
Acres	4.10
Type	Land
Sub-Type	Industrial Land
Status	Active

Community Information

Address	9 West Hill Drive
Subdivision	NONE
City	Rural Peace No. 135, M.D. of
County	Peace No. 135, M.D. of
Province	Alberta

Postal Code T0H 1W0

Additional Information

Date Listed December 10th, 2024
Days on Market 235
Zoning Rural Industrial

Listing Details

Listing Office Royal LePage Valley Realty

Data is supplied by Pillar 9â„¢ MLSÂ® System. Pillar 9â„¢ is the owner of the copyright in its MLSÂ® System. Data is deemed reliable but is not guaranteed accurate by Pillar 9â„¢. The trademarks MLSÂ®, Multiple Listing ServiceÂ® and the associated logos are owned by The Canadian Real Estate Association (CREA) and identify the quality of services provided by real estate professionals who are members of CREA. Used under license.