

\$339,900 - 165 Centre Street, Tilley

MLS® #A2183480

\$339,900

4 Bedroom, 3.00 Bathroom, 3,340 sqft

Residential on 0.08 Acres

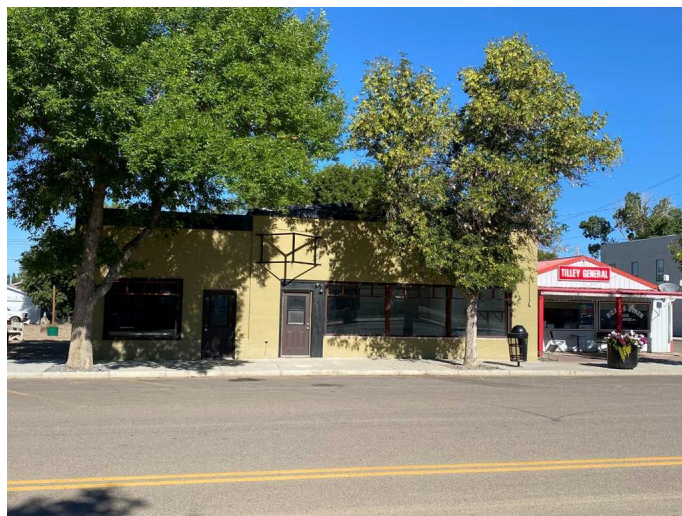
NONE, Tilley, Alberta

RESIDENTIAL PROPERTY in the heart of Tilly AB. Located only 22km east of Brooks, this hamlet is a great community! The single story building is 3340 sqft . A washroom, with wheel chair accessibility. There a office space, a space previously used as a salon, and a work storage area, these spaces cold easily be converted to more living space. The residential space has 2080 sqft, with 4 bedrooms, a 3 piece main bathroom. Primary has a walk in closet, and 4 piece ensuite. The property also has a basement with an additional 2240 sqft. The backyard features a 12x24 storage garage.

Built in 1960

Essential Information

MLS® #	A2183480
Price	\$339,900
Bedrooms	4
Bathrooms	3.00
Full Baths	2
Half Baths	1
Square Footage	3,340
Acres	0.08
Year Built	1960
Type	Residential
Sub-Type	Detached
Style	Bungalow
Status	Active



Community Information

Address	165 Centre Street
Subdivision	NONE
City	Tilley
County	Newell, County of
Province	Alberta
Postal Code	T0J 3K0

Amenities

Parking Spaces	5
Parking	Single Garage Detached
# of Garages	1

Interior

Interior Features	See Remarks
Appliances	Dishwasher, Range Hood, Refrigerator, Stove(s), Microwave
Heating	Forced Air, Natural Gas
Cooling	None
Has Basement	Yes
Basement	See Remarks

Exterior

Exterior Features	None
Lot Description	Other
Roof	Metal
Construction	Stucco
Foundation	Block

Additional Information

Date Listed	December 11th, 2024
Days on Market	239
Zoning	B-Ham

Listing Details

Listing Office	ROYAL LEPAGE COMMUNITY REALTY
----------------	-------------------------------

Data is supplied by Pillar 9â„¢ MLS® System. Pillar 9â„¢ is the owner of the copyright in its MLS® System. Data is deemed reliable but is not guaranteed accurate by Pillar 9â„¢. The trademarks MLS®, Multiple Listing Service® and the associated logos are owned by The Canadian Real Estate Association (CREA) and identify the quality of services provided by real estate professionals who are members of CREA. Used under license.