

\$25,000 - 105 Pheasant Road, Rosemary

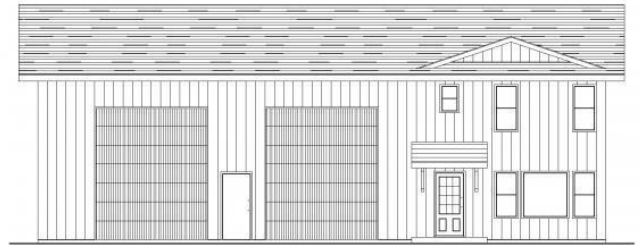
MLS® #A2187433

\$25,000

0 Bedroom, 0.00 Bathroom,
Land on 0.41 Acres

NONE, Rosemary, Alberta

Look to the future, build a "Shouse" in Rosemary! A newly developed General Industrial subdivision on Pheasant Road is promoting a discretionary development of a "Shouse" or also known as a Live/Work development. The Village of Rosemary is offering a promotional price of \$25,000 until December 31, 2025, with commencement of construction within 12 months of a signed purchase agreement date. The lots are a generous size of 125'x 146'. All utilities are available and easy to access. The community offers a K-12 school, Recreation/Arena Facility, Updated parks, convenience store, post office, bakery and a local butcher shop. A little hidden gem of a campground as well. With a shower/bathroom building, hook ups and large parking pads. There is also a \$2000 Tax allowance that will be put towards the Municipal Taxes.



Essential Information

MLS® #	A2187433
Price	\$25,000
Bathrooms	0.00
Acres	0.41
Type	Land
Sub-Type	Industrial Land
Status	Active

Community Information

Address	105 Pheasant Road
Subdivision	NONE
City	Rosemary
County	Newell, County of
Province	Alberta
Postal Code	T0J2W0

Amenities

Utilities	Electricity at Lot Line, Natural Gas at Lot Line, Sewer Available, Water Available
-----------	--

Additional Information

Date Listed	January 13th, 2025
Days on Market	202
Zoning	I

Listing Details

Listing Office	Century 21 Foothills Real Estate
----------------	----------------------------------

Data is supplied by Pillar 9â„¢ MLS® System. Pillar 9â„¢ is the owner of the copyright in its MLS® System. Data is deemed reliable but is not guaranteed accurate by Pillar 9â„¢. The trademarks MLS®, Multiple Listing Service® and the associated logos are owned by The Canadian Real Estate Association (CREA) and identify the quality of services provided by real estate professionals who are members of CREA. Used under license.