

# \$329,900 - 101 Stephens Crescent, Hanna

MLS® #A2188457

**\$329,900**

4 Bedroom, 3.00 Bathroom, 1,271 sqft

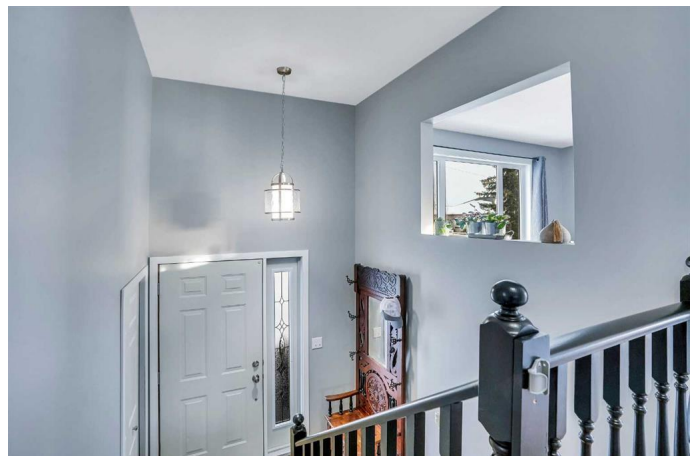
Residential on 0.13 Acres

NONE, Hanna, Alberta

This stunning property has just undergone a complete top-to-bottom renovation, offering modern comfort and style.

As you step into the main entry, you'll immediately notice the luxurious vinyl plank flooring, fresh paint, and brand-new windows throughout the home. The main level offers a bright and open concept, where the living room flows seamlessly into the dining area and kitchen, creating an inviting space for relaxation and entertaining. Just off the dining room, sliding glass doors lead to a brand-new deck, perfect for outdoor gatherings. The gourmet kitchen is a chef's dream, boasting all-new upper and lower cabinets, sleek countertops, and brand-new stainless steel appliances. For added convenience, the laundry room features ample upper cabinets and a laundry sink, combining functionality with style. The lower level of this bilevel home is flooded with natural light, thanks to its large windows—a hallmark feature of this design. It offers a massive family room perfect for cozy evenings, a dedicated office area, a 3-piece bathroom, an additional bedroom, and ample storage space, making it as functional as it is inviting. The exterior is equally impressive, with a meticulously maintained yard featuring fresh sod and a 2-car parking pad for convenient off-street parking.

All renovations, completed in 2024, ensure that this home is move-in ready with modern upgrades throughout. This is a must-see property! Don't miss the chance to explore



it furtherâ€”take a look at the 3D tour and contact your realtor today to schedule a viewing.  
[https://youriguide.com/101\\_stephens\\_crescent\\_hanna\\_ab](https://youriguide.com/101_stephens_crescent_hanna_ab)

Built in 1982

### Essential Information

MLS® #	A2188457
Price	\$329,900
Bedrooms	4
Bathrooms	3.00
Full Baths	2
Half Baths	1
Square Footage	1,271
Acres	0.13
Year Built	1982
Type	Residential
Sub-Type	Detached
Style	Bi-Level
Status	Active

### Community Information

Address	101 Stephens Crescent
Subdivision	NONE
City	Hanna
County	Special Area 2
Province	Alberta
Postal Code	T0J 1P0

### Amenities

Parking Spaces	4
Parking	Off Street, Parking Pad

### Interior

Interior Features	Open Floorplan, Storage, Vinyl Windows
Appliances	Dishwasher, Refrigerator, Stove(s), Washer/Dryer
Heating	Forced Air

Cooling	None
Has Basement	Yes
Basement	Finished, Full

## Exterior

Exterior Features	Garden, Private Yard
Lot Description	Back Lane, Back Yard, Corner Lot, Lawn
Roof	Asphalt Shingle
Construction	Mixed
Foundation	Wood

## Additional Information

Date Listed	January 17th, 2025
Days on Market	116
Zoning	R1

## Listing Details

Listing Office	eXp Realty
----------------	------------

Data is supplied by Pillar 9â„¢ MLSÂ® System. Pillar 9â„¢ is the owner of the copyright in its MLSÂ® System. Data is deemed reliable but is not guaranteed accurate by Pillar 9â„¢. The trademarks MLSÂ®, Multiple Listing ServiceÂ® and the associated logos are owned by The Canadian Real Estate Association (CREA) and identify the quality of services provided by real estate professionals who are members of CREA. Used under license.