

\$520,000 - 225 Bacon Place, Fort McMurray

MLS® #A2195423

\$520,000

5 Bedroom, 4.00 Bathroom, 2,053 sqft

Residential on 0.15 Acres

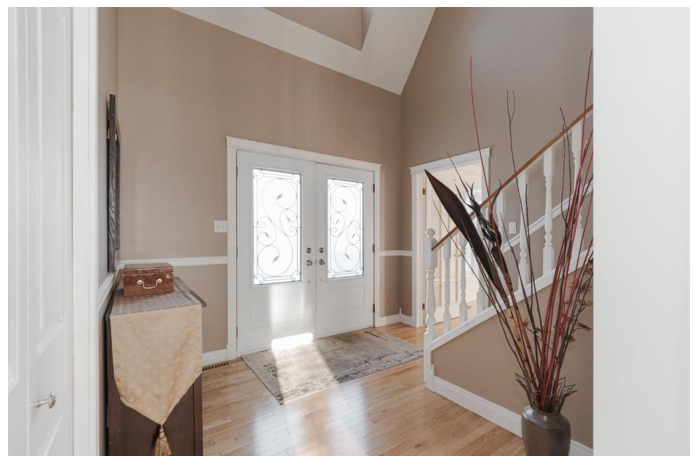
Timberlea, Fort McMurray, Alberta

Welcome to 225 Bacon Place: This charming Cape Cod-style home stands out with its beautiful curb appeal, expansive living space, and ideal layout featuring four bedrooms upstairs, a fully developed basement, and a prime location in one of Timberlea's most desirable neighbourhoods. Situated just steps from playgrounds and schools in a peaceful setting, this stunning home is one you won't want to miss.

A Cape Cod-style home is a rare find, making this property one of the most distinctive on the street. It sits proudly on a large pie-shaped lot with a front driveway leading to a 22x24 attached garage. The timeless black-and-white exterior enhances its curb appeal, while the fully fenced yard includes a large storage shed designed to match the home's aesthetic.

Inside, high ceilings and an open staircase welcome you into the spacious foyer. The traditional layout offers a bright front living and dining room, with fresh paint and gleaming hardwood floors throughout. Perfect for hosting and entertaining, the kitchen and sunken family room are positioned at the back of the home, overlooking the yard. A two-piece bathroom and a large mudroom with laundry, a side entrance, and access to the attached garage complete the main level.

Upstairs, the second level provides a private retreat with four generously sized bedrooms



and two bathrooms. The middle bedroom is currently used as a dressing room, while the primary suite is spacious and features a large ensuite and walk-in closet.

The fully developed basement offers additional living space, including a family room, built-in office area, fifth bedroom, and another bathroom.

With timeless finishes and a sought-after layout, this home is truly special. Schedule your private tour today.

Built in 1988

Essential Information

MLS® #	A2195423
Price	\$520,000
Bedrooms	5
Bathrooms	4.00
Full Baths	3
Half Baths	1
Square Footage	2,053
Acres	0.15
Year Built	1988
Type	Residential
Sub-Type	Detached
Style	2 Storey
Status	Active

Community Information

Address	225 Bacon Place
Subdivision	Timberlea
City	Fort McMurray
County	Wood Buffalo
Province	Alberta
Postal Code	T9K 1Z8

Amenities

Parking Spaces	4
Parking	Double Garage Attached, Driveway, Parking Pad, Front Drive, Garage Faces Front
# of Garages	2

Interior

Interior Features	Storage, High Ceilings
Appliances	See Remarks
Heating	Forced Air
Cooling	None
Has Basement	Yes
Basement	Finished, Full

Exterior

Exterior Features	Storage
Lot Description	Back Yard, Pie Shaped Lot, Landscaped, No Neighbours Behind
Roof	Asphalt Shingle
Construction	Vinyl Siding
Foundation	Wood

Additional Information

Date Listed	February 21st, 2025
Days on Market	70
Zoning	R1

Listing Details

Listing Office	The Agency North Central Alberta
----------------	----------------------------------

Data is supplied by Pillar 9â„¢ MLS® System. Pillar 9â„¢ is the owner of the copyright in its MLS® System. Data is deemed reliable but is not guaranteed accurate by Pillar 9â„¢. The trademarks MLS®, Multiple Listing Service® and the associated logos are owned by The Canadian Real Estate Association (CREA) and identify the quality of services provided by real estate professionals who are members of CREA. Used under license.