

# \$515,000 - 105 303a Larch Close, Rural Red Deer County

MLS® #A2196165

**\$515,000**

0 Bedroom, 0.00 Bathroom,  
Commercial on 0.00 Acres

Piper Creek Business Park, Rural Red Deer  
County, Alberta

This condo was built in 2016 & features modern upgrades and a spacious shop. Zoned BSI Industrial. This property includes 3-phase 100-amp power, a 12' x 14' loading door, forced air heating, two offices, a spacious reception area, a large boardroom, a kitchen, and 2 washrooms.

Built in 2016

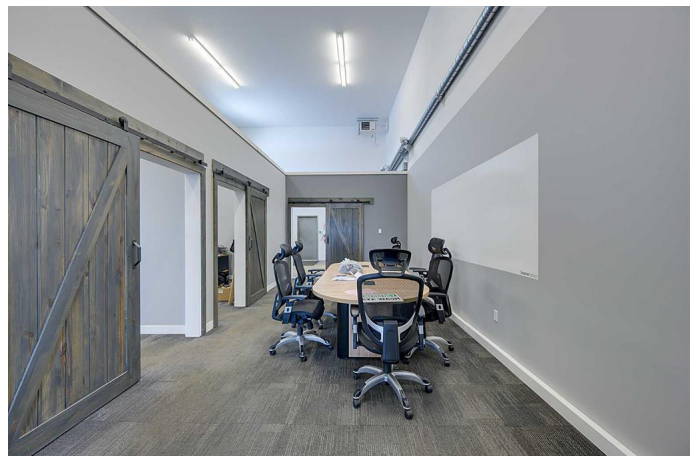
## Essential Information

MLS® #	A2196165
Price	\$515,000
Bathrooms	0.00
Acres	0.00
Year Built	2016
Type	Commercial
Sub-Type	Industrial
Status	Active

## Community Information

Address	105 303a Larch Close
Subdivision	Piper Creek Business Park
City	Rural Red Deer County
County	Red Deer County
Province	Alberta
Postal Code	T4E 1B4

## Additional Information



Date Listed	February 19th, 2025
Days on Market	166
Zoning	BSI

### **Listing Details**

Listing Office	Royal LePage Network Realty Corp.
----------------	-----------------------------------

Data is supplied by Pillar 9â„¢ MLS® System. Pillar 9â„¢ is the owner of the copyright in its MLS® System. Data is deemed reliable but is not guaranteed accurate by Pillar 9â„¢. The trademarks MLS®, Multiple Listing Service® and the associated logos are owned by The Canadian Real Estate Association (CREA) and identify the quality of services provided by real estate professionals who are members of CREA. Used under license.