

\$349,900 - 328, 510 Edmonton Trail Ne, Calgary

MLS® #A2197120

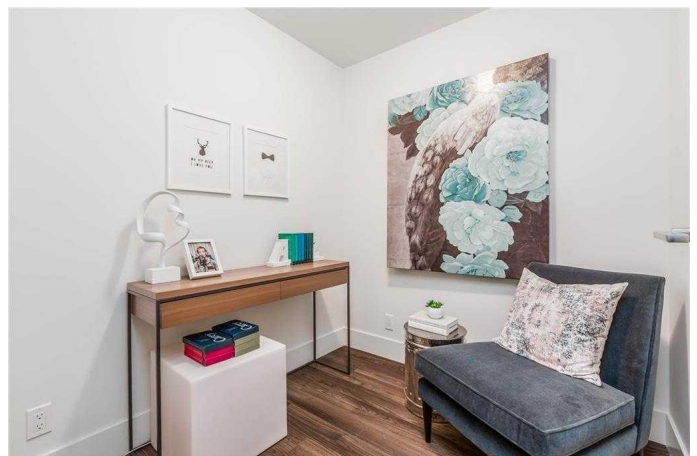
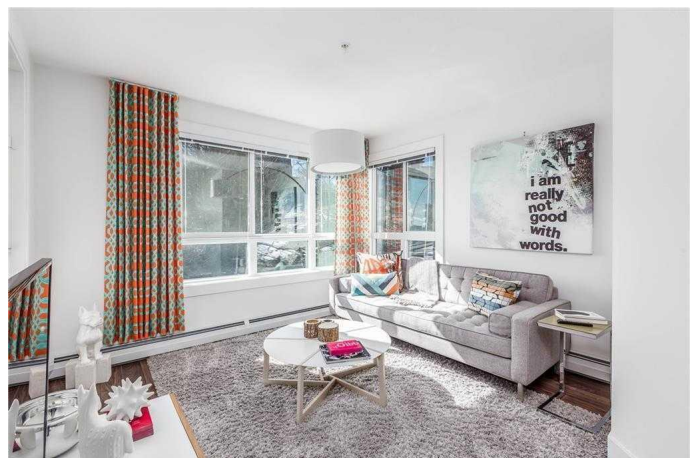
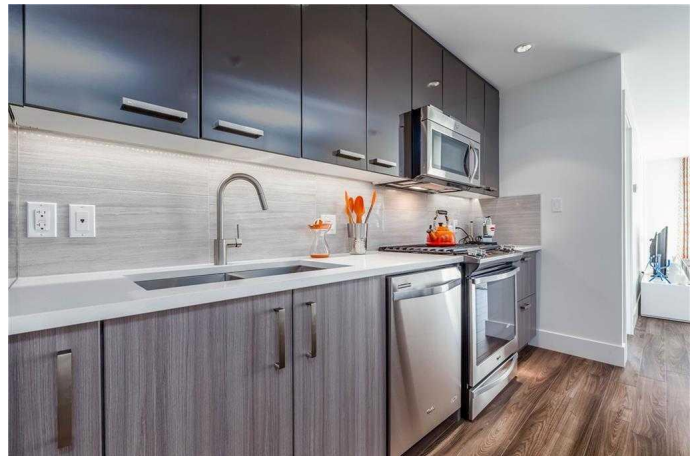
\$349,900

2 Bedroom, 2.00 Bathroom, 739 sqft

Residential on 0.00 Acres

Bridgeland/Riverside, Calgary, Alberta

Experience the ultimate urban lifestyle in this exceptional BRIDGELAND condo, featuring 2 bedrooms, 2 bathrooms, and a versatile DEN/FLEX SPACE - perfect for modern living. With breathtaking DOWNTOWN VIEWS, this unit stands out as one of the LARGER LAYOUTS available, providing an inviting environment for you to live, work, and play. Imagine cooking in your stunning kitchen equipped with a GAS CONVECTION STOVE, high-end STAINLESS STEEL appliances, sleek modern cabinetry offering ample storage, and exquisite QUARTZ countertops. The open-concept living room is bathed in natural light through oversized windows, creating an inviting atmosphere with elegant LAMINATE FLOORING. Retreat to the primary bedroom, which features a spa-like 3-piece ensuite with a glass shower, chic quartz countertops, and generous closet space. The second bedroom is thoughtfully designed for guests, roommates or as an additional workspace, with easy access to another well-appointed 4-piece bathroom. Enjoy the convenience of IN-SUITE LAUNDRY and a dedicated flex room that can serve as a home office, den, or additional storage. Step outside to your expansive BALCONY, where you can soak in one of the most stunning WEST-FACING CITY SKYLINE VIEWS. This condo also offers the luxury of HEATED, underground TITLED PARKING, convenient visitor parking within the parkade, and an assigned STORAGE LOCKER for larger or



seasonal items. Experience an active lifestyle in this professionally managed building, which boasts a FITNESS GYM, secure BIKE STORAGE, and a tranquil private courtyard. With accessible elevators, you'll enjoy seamless movement throughout the building and can easily explore Bridgeland's vibrant, growing community, known for its pedestrian-friendly streets and lush green spaces. Take a stroll or bike ride along the scenic Bow River pathway and love being mere minutes from trendy cafes, remarkable restaurants, and chic shops. This PET-FRIENDLY condo is waiting for you, pending board approval. Don't miss out on this incredible opportunity—call now for your private viewing and make this remarkable space your new home! DISCLAIMER: Initial pictures from a previous listing used with written permission.

Built in 2016

Essential Information

MLS® #	A2197120
Price	\$349,900
Bedrooms	2
Bathrooms	2.00
Full Baths	2
Square Footage	739
Acres	0.00
Year Built	2016
Type	Residential
Sub-Type	Apartment
Style	Single Level Unit
Status	Active

Community Information

Address	328, 510 Edmonton Trail Ne
Subdivision	Bridgeland/Riverside
City	Calgary

County	Calgary
Province	Alberta
Postal Code	T2E 3H1

Amenities

Amenities	Elevator(s), Fitness Center, Parking, Secured Parking, Service Elevator(s), Snow Removal, Storage, Trash, Visitor Parking
Parking Spaces	1
Parking	Heated Garage, Stall, Titled, Underground, Guest, Secured
# of Garages	1

Interior

Interior Features	High Ceilings, Open Floorplan, Quartz Counters, Vinyl Windows, Walk-In Closet(s)
Appliances	Dishwasher, Dryer, Garage Control(s), Gas Stove, Microwave Hood Fan, Refrigerator, Washer, Window Coverings
Heating	Baseboard, Natural Gas
Cooling	None
# of Stories	4

Exterior

Exterior Features	Balcony
Lot Description	Landscaped, Views, Sloped
Roof	Tar/Gravel
Construction	Composite Siding, Vinyl Siding, Wood Frame, Wood Siding
Foundation	Poured Concrete

Additional Information

Date Listed	April 1st, 2025
Days on Market	42
Zoning	M-C2

Listing Details

Listing Office	CIR Realty
----------------	------------

Data is supplied by Pillar 9â„¢ MLS® System. Pillar 9â„¢ is the owner of the copyright in its MLS® System. Data is deemed reliable but is not guaranteed accurate by Pillar 9â„¢. The trademarks MLS®, Multiple Listing Service® and the associated logos are owned by The Canadian Real Estate Association (CREA) and identify the quality of services provided by real estate professionals who are members of CREA. Used under license.