

\$110,000 - Lot 2, Willowside Estates, Rural Woodlands County

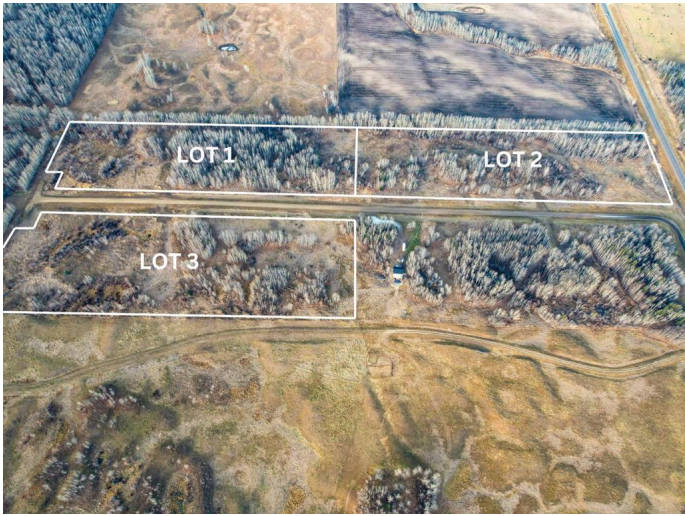
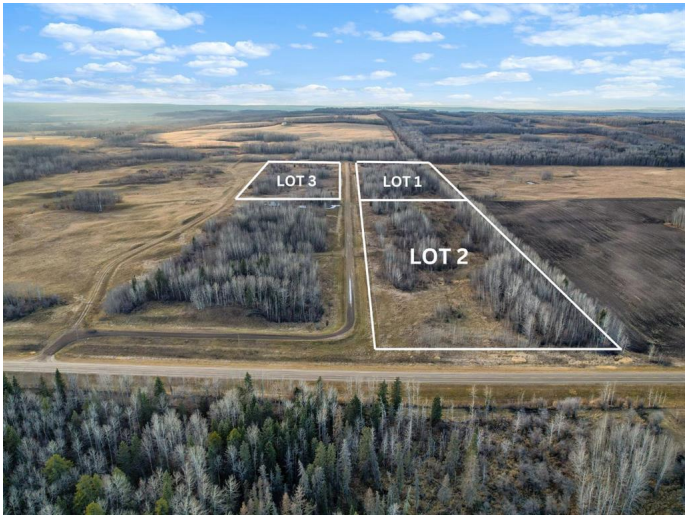
MLS® #A2198512

\$110,000

0 Bedroom, 0.00 Bathroom,
Land on 13.07 Acres

NONE, Rural Woodlands County, Alberta

13 Acres of Countryside Bliss – Perfect to Call Home. Escape to the rolling landscapes of Willowside Estates, Woodlands County, situated between Whitecourt and Mayerthorpe. The property features room for your garden or hobby farm. There are no deadlines for construction, allowing you to enjoy this space as your private camp or retreat. The area is surrounded by farmland, wildlife, and nature, providing a tranquil atmosphere. Utilities such as power and gas are available in the subdivision, but you also have the option to go off-grid. Property taxes are \$514 per year. Lot 2 offers a generous size of 13.07 acres. Conveniently located between Whitecourt and Mayerthorpe.



Essential Information

MLS® #	A2198512
Price	\$110,000
Bathrooms	0.00
Acres	13.07
Type	Land
Sub-Type	Residential Land
Status	Active

Community Information

Address	Lot 2, Willowside Estates
Subdivision	NONE

City	Rural Woodlands County
County	Woodlands County
Province	Alberta
Postal Code	T0E 1N0

Additional Information

Date Listed	March 2nd, 2025
Days on Market	153
Zoning	Agricultural

Listing Details

Listing Office	ROYAL LEPAGE MODERN REALTY
----------------	----------------------------

Data is supplied by Pillar 9â„¢ MLS® System. Pillar 9â„¢ is the owner of the copyright in its MLS® System. Data is deemed reliable but is not guaranteed accurate by Pillar 9â„¢. The trademarks MLS®, Multiple Listing Service® and the associated logos are owned by The Canadian Real Estate Association (CREA) and identify the quality of services provided by real estate professionals who are members of CREA. Used under license.