

\$1,534,500 - Se-36-51-27-4, Rural Parkland County

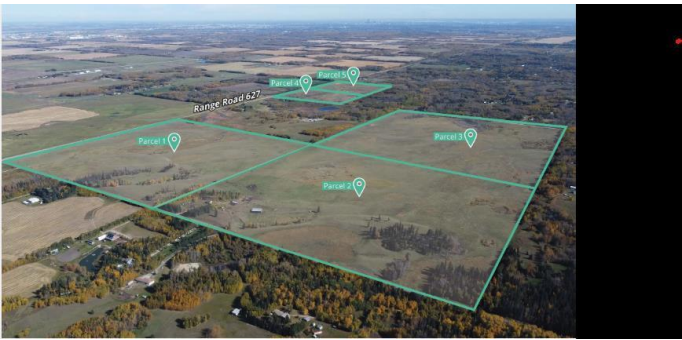
MLS® #A2198730

\$1,534,500

0 Bedroom, 0.00 Bathroom,
Land on 157.27 Acres

Woodland Park_CPAR, Rural Parkland County, Alberta

Click brochure link for more information** Five parcels of development land ranging from +/- 37.90 acres to +/- 158.00 acres in size. Located in Parkland County, one of Alberta's largest and most densely populated municipalities. Situated along Range Road 627 providing excellent access to major transportation routes via Range Road 627 and Highway 60. Approved Area Structure Plan with mixed use and country residential zoning. This is Parcel 3.



Essential Information

MLS® #	A2198730
Price	\$1,534,500
Bathrooms	0.00
Acres	157.27
Type	Land
Sub-Type	Residential Land
Status	Active

Community Information

Address	Se-36-51-27-4
Subdivision	Woodland Park_CPAR
City	Rural Parkland County
County	Parkland County
Province	Alberta
Postal Code	T7X3M9

Additional Information

Date Listed	March 3rd, 2025
Days on Market	158
Zoning	CR - Country Residential

Listing Details

Listing Office	Honestdoor Inc.
----------------	-----------------

Data is supplied by Pillar 9â„¢ MLS® System. Pillar 9â„¢ is the owner of the copyright in its MLS® System. Data is deemed reliable but is not guaranteed accurate by Pillar 9â„¢. The trademarks MLS®, Multiple Listing Service® and the associated logos are owned by The Canadian Real Estate Association (CREA) and identify the quality of services provided by real estate professionals who are members of CREA. Used under license.