

\$569,900 - 1025 West Lakeview Drive, Chestermere

MLS® #A2199207

\$569,900

3 Bedroom, 3.00 Bathroom, 1,631 sqft
Residential on 0.07 Acres

Chelsea_CH, Chestermere, Alberta

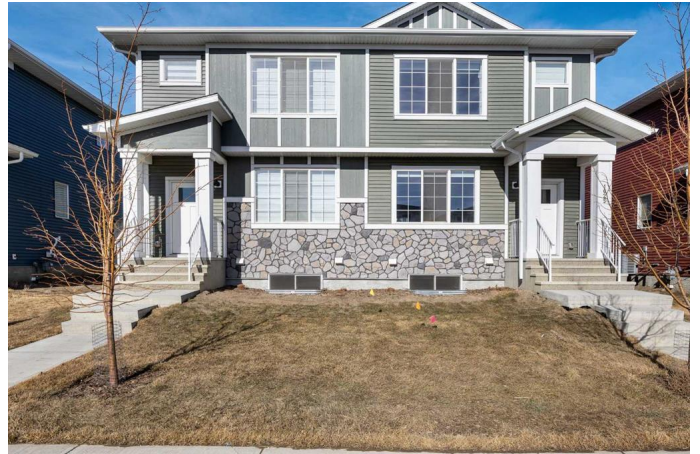
OPEN HOUSE Saturday, April 19 from 11-1pm! PRICE IMPROVEMENT - SELLER IS INCLUDING SOD in backyard! Incredible Investment Opportunity in Chelsea, Chestermere!

Welcome to this exceptional investment opportunity! Purchase one unit or buy both (next door is available for purchase) for maximum potential! Live in one side and rent out the other, or add basement suites to create up to four income-generating doors.

This brand-new 2024-built duplex features 3 bedrooms + bonus room, 2.5 bathrooms, and is located in the new and growing community of Chelsea in Chestermere.

Step inside to a modern kitchen, perfect for cooking and entertaining, complete with a oversized island, sleek quartz countertops, and stylish cabinetry. Upstairs, the spacious primary bedroom boasts a private ensuite, while two additional bedrooms, a full bath, and a bonus room with upstairs laundry provide comfort and convenience for the family.

The unfinished basement with a separate side entrance offers incredible potential for future development! Whether for additional living space or a rental suite (subject to approval and permitting by the city). Plus, the poured parking pad is already in place for a future garage, making this home a fantastic



investment.

Prime location: Just minutes from Chestermere Lake, 3 minutes to Costco, Homesense, Starbucks and more , and 20 minutes to downtown Calgary, this family-friendly neighborhood offers breathtaking mountain views when you look to the right of your front door.

Don't miss this incredible opportunityâ€”whether you're an investor or a future homeowner, this property is a smart buy!

Contact us today for more details or to schedule a viewing!

Built in 2024

Essential Information

| | |
|----------------|------------------------|
| MLS® # | A2199207 |
| Price | \$569,900 |
| Bedrooms | 3 |
| Bathrooms | 3.00 |
| Full Baths | 2 |
| Half Baths | 1 |
| Square Footage | 1,631 |
| Acres | 0.07 |
| Year Built | 2024 |
| Type | Residential |
| Sub-Type | Semi Detached |
| Style | 2 Storey, Side by Side |
| Status | Active |

Community Information

| | |
|-------------|--------------------------|
| Address | 1025 West Lakeview Drive |
| Subdivision | Chelsea_CH |
| City | Chestermere |
| County | Chestermere |

| | |
|-------------|---------|
| Province | Alberta |
| Postal Code | T1X 2T2 |

Amenities

| | |
|----------------|-------------|
| Parking Spaces | 2 |
| Parking | Parking Pad |

Interior

| | |
|-------------------|--|
| Interior Features | Quartz Counters, Walk-In Closet(s) |
| Appliances | Dishwasher, Electric Stove, Microwave Hood Fan, Refrigerator, Washer/Dryer |
| Heating | Forced Air |
| Cooling | None |
| Has Basement | Yes |
| Basement | See Remarks, Unfinished |

Exterior

| | |
|-------------------|----------------------------------|
| Exterior Features | Other, Private Yard |
| Lot Description | Back Lane, Back Yard, Front Yard |
| Roof | Asphalt Shingle |
| Construction | Stone, Vinyl Siding |
| Foundation | Poured Concrete |

Additional Information

| | |
|----------------|-----------------|
| Date Listed | March 5th, 2025 |
| Days on Market | 56 |
| Zoning | R-3 |

Listing Details

| | |
|----------------|--------------------------|
| Listing Office | The Real Estate District |
|----------------|--------------------------|

Data is supplied by Pillar 9â„¢ MLS® System. Pillar 9â„¢ is the owner of the copyright in its MLS® System. Data is deemed reliable but is not guaranteed accurate by Pillar 9â„¢. The trademarks MLS®, Multiple Listing Service® and the associated logos are owned by The Canadian Real Estate Association (CREA) and identify the quality of services provided by real estate professionals who are members of CREA. Used under license.