

\$1,840,000 - Nw-24-73-6-w6 95 Avenue, Sexsmith

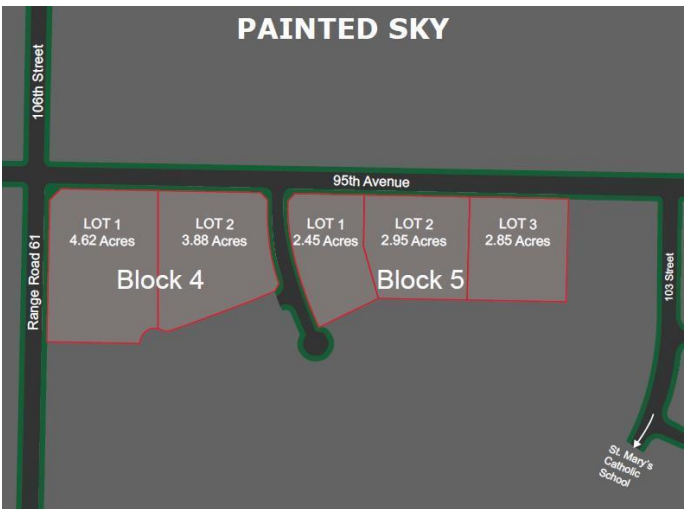
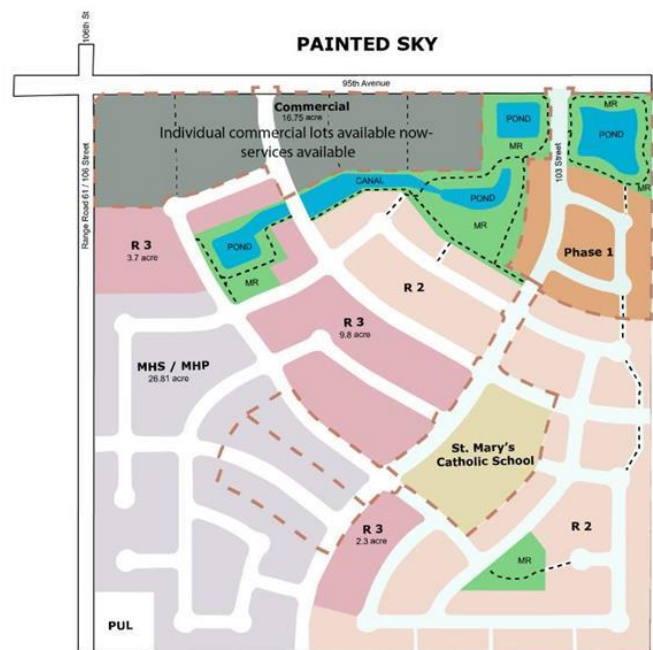
MLS® #A2200416

\$1,840,000

0 Bedroom, 0.00 Bathroom,
Land on 136.18 Acres

NONE, Sexsmith, Alberta

Listed far below appraised value. It is appealing to developers looking for flexible zoning to satisfy the market for various affordable housing options “ (commercial lots also available for quicker sale). Less than \$5,000 per lot with 400+/- lots (136.18 acres) ready for further development with grading, some underground services, plus a new K-8 school already in use in the centre of it all. From developer to builder, the low price of this land combined with grants will allow stronger profits while delivering affordable homes. Explore grants as gov€™t continues incentivizing affordable housing - such as Aquatera sewer and water hookups. More grants could surface soon as gov€™t continues to address the affordable housing crisis. Painted Sky offers quiet living “ only 12 miles from the hustle and bustle of Grande Prairie. Discover a harmonious blend of small-town charm and metropolitan conveniences. Contact your favourite commercial agent to help explore these options further.



Essential Information

MLS® #	A2200416
Price	\$1,840,000
Bathrooms	0.00
Acres	136.18
Type	Land

Sub-Type	Residential Land
Status	Active

Community Information

Address	Nw-24-73-6-w6 95 Avenue
Subdivision	NONE
City	Sexsmith
County	Grande Prairie No. 1, County of
Province	Alberta
Postal Code	T0H 3C0

Exterior

Exterior Features	Playground
-------------------	------------

Additional Information

Date Listed	May 26th, 2025
Days on Market	72
Zoning	AG

Listing Details

Listing Office	RE/MAX Grande Prairie
----------------	-----------------------

Data is supplied by Pillar 9â„¢ MLSÂ® System. Pillar 9â„¢ is the owner of the copyright in its MLSÂ® System. Data is deemed reliable but is not guaranteed accurate by Pillar 9â„¢. The trademarks MLSÂ®, Multiple Listing ServiceÂ® and the associated logos are owned by The Canadian Real Estate Association (CREA) and identify the quality of services provided by real estate professionals who are members of CREA. Used under license.