

\$167,900 - 2103 11 Street, Marlboro

MLS® #A2201624

\$167,900

4 Bedroom, 1.00 Bathroom, 1,288 sqft

Residential on 0.40 Acres

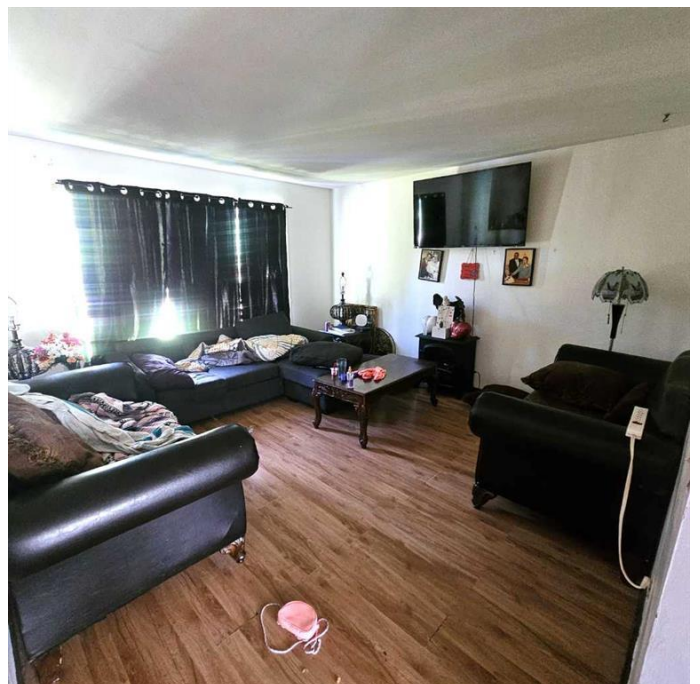
Marlboro, Marlboro, Alberta

1982 bi-level home with a large addition sitting on a .4 acre lot in Marlboro. The main floor hosts a spacious living room, massive kitchen and eating area with access to the deck, a storage room that could be main level laundry, 2 large bedrooms, and a 4-piece bathroom. Downstairs in the partially finished basement thereâ€™s a family room area, 2 bedrooms, a storage room and an open area with laundry and the utility areas. Outside thereâ€™s a nice deck with a wheelchair ramp and stairs, and a large yard with trees and shrubs and a gravel driveway for parking. Foundation is concrete block and the roof is asphalt shingle. Great location in Marlboro with the playground, pump track and ice rink across the street. Located approximately 25km west of Edson and 61km from Hinton. Area amenities include a golf course, 3 lakes and Sundance Provincial Park. Sold "as is/where is".

Built in 1982

Essential Information

MLS® #	A2201624
Price	\$167,900
Bedrooms	4
Bathrooms	1.00
Full Baths	1
Square Footage	1,288
Acres	0.40
Year Built	1982



Type	Residential
Sub-Type	Detached
Style	Bi-Level
Status	Active

Community Information

Address	2103 11 Street
Subdivision	Marlboro
City	Marlboro
County	Yellowhead County
Province	Alberta
Postal Code	T7E 3A1

Amenities

Utilities	Electricity Connected, Natural Gas Connected, High Speed Internet Available, Sewer Connected, Water Connected
Parking Spaces	4
Parking	Front Drive, Gravel Driveway, Off Street

Interior

Interior Features	Laminate Counters, Storage, Vinyl Windows
Appliances	None
Heating	Forced Air, Natural Gas
Cooling	None
Has Basement	Yes
Basement	Full, Partially Finished

Exterior

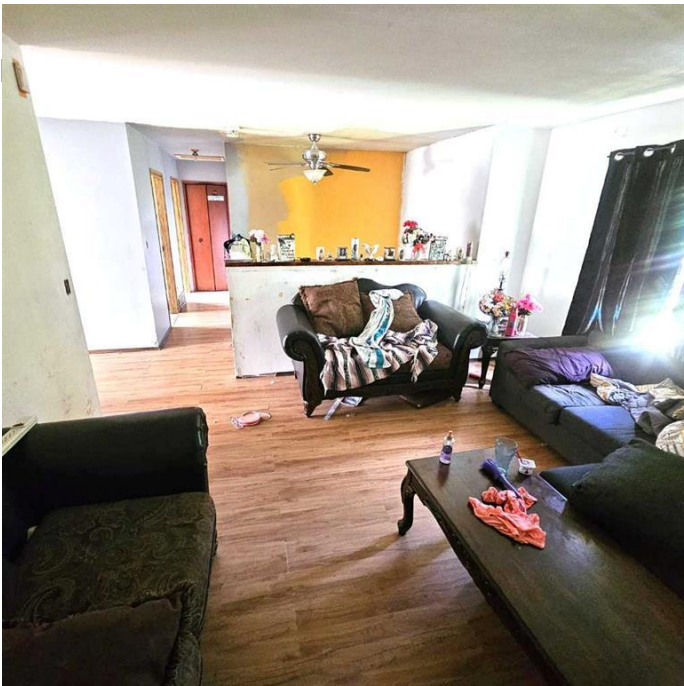
Exterior Features	Lighting, Rain Gutters
Lot Description	Back Yard, Corner Lot, Few Trees, Front Yard, Fruit Trees/Shrub(s), Landscaped, Lawn, Level, Rectangular Lot
Roof	Asphalt Shingle
Construction	Vinyl Siding, Wood Frame, Wood Siding
Foundation	Brick/Mortar

Additional Information

Date Listed	March 12th, 2025
Days on Market	148
Zoning	UND

Listing Details

Listing Office ROYAL LEPAGE EDSON REA



Data is supplied by Pillar 9â„¢ MLS® System. Pillar 9â„¢ is the owner of the copyright in its MLS® System. Data is deemed reliable but is not guaranteed accurate by Pillar 9â„¢. The trademarks MLS®, Multiple Listing Service® and the associated logos are owned by The Canadian Real Estate Association (CREA) and identify the quality of services provided by real estate professionals who are members of CREA. Used under license.