

# \$112,000 - 70, 2715 73 Avenue, Lloydminster

---

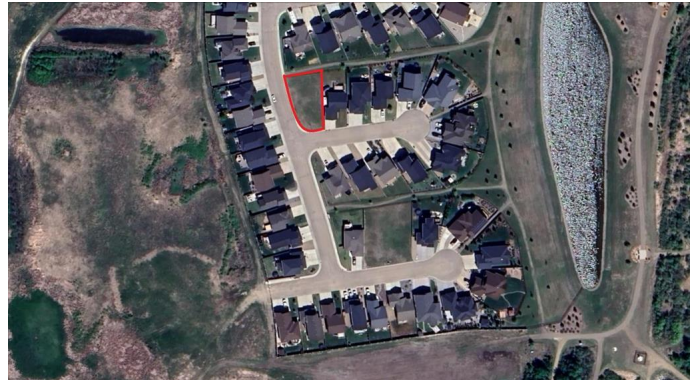
MLS® #A2207370

**\$112,000**

0 Bedroom, 0.00 Bathroom,  
Land on 0.13 Acres

Parkview Estates, Lloydminster, Alberta

Location is everything when you build a new home ... consider a place where after a certain time a security gate facilitates who enters and leaves the development. This is Lakeshore Estates, a subdivision where entry after hours is restricted to owners and/or invited guests. There are no bad locations within this development, as these are non-busy streets that don't offer a shortcut to get anywhere. This bare land residential development is prime for you to build your dream home ... this community of homes offers a private walking path, private playground and many other amenities you will find in similar residential developments. Lot 70 is rectangular with the backyard facing West. This lot is super affordable-probably the most affordable lot of its size available in the City of Lloydminster. This lot is 6097 square feet and will accommodate a large size family home and attached garage.



## Essential Information

MLS® #	A2207370
Price	\$112,000
Bathrooms	0.00
Acres	0.13
Type	Land
Sub-Type	Residential Land
Status	Active

## Community Information

Address	70, 2715 73 Avenue
Subdivision	Parkview Estates
City	Lloydminster
County	Lloydminster
Province	Alberta
Postal Code	T9V 3L7

## Amenities

Amenities	None
-----------	------

## Exterior

Lot Description	Cul-De-Sac
-----------------	------------

## Additional Information

Date Listed	April 1st, 2025
Days on Market	124
Zoning	DC1

## Listing Details

Listing Office	MUSGRAVE AGENCIES
----------------	-------------------

Data is supplied by Pillar 9â„¢ MLS® System. Pillar 9â„¢ is the owner of the copyright in its MLS® System. Data is deemed reliable but is not guaranteed accurate by Pillar 9â„¢. The trademarks MLS®, Multiple Listing Service® and the associated logos are owned by The Canadian Real Estate Association (CREA) and identify the quality of services provided by real estate professionals who are members of CREA. Used under license.