

\$69,900 - Pt Ne-22-73-12-w6, Rural Grande Prairie No. 1, County of

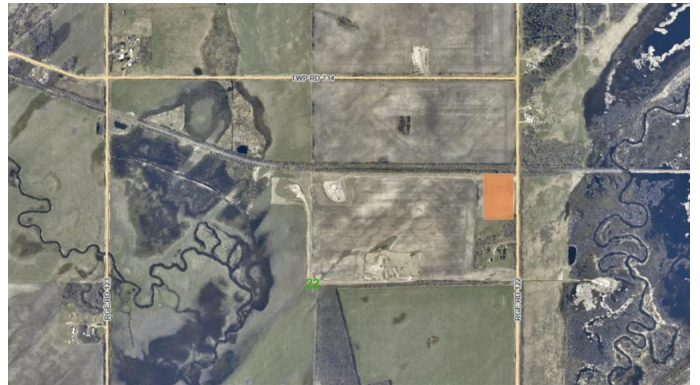
MLS® #A2207418

\$69,900

0 Bedroom, 0.00 Bathroom,
Land on 5.96 Acres

NONE, Rural Grande Prairie No. 1, County of,
Alberta

5.96 acres. 1.7 miles off pavement near
Lymburn designated residential vacant land.
Subdivision has been approved and is close to
completion. 6-7 miles from unlimited crown
land!



Essential Information

| | |
|-----------|------------------|
| MLS® # | A2207418 |
| Price | \$69,900 |
| Bathrooms | 0.00 |
| Acres | 5.96 |
| Type | Land |
| Sub-Type | Residential Land |
| Status | Active |

Community Information

| | |
|-------------|---------------------------------------|
| Address | Pt Ne-22-73-12-w6 |
| Subdivision | NONE |
| City | Rural Grande Prairie No. 1, County of |
| County | Grande Prairie No. 1, County of |
| Province | Alberta |
| Postal Code | T0H 2C0 |

Additional Information

| | |
|----------------|------------------|
| Date Listed | March 31st, 2025 |
| Days on Market | 136 |
| Zoning | CR-5 |

Listing Details

Listing Office RE/MAX Grande Prairie

Data is supplied by Pillar 9â„¢ MLS® System. Pillar 9â„¢ is the owner of the copyright in its MLS® System. Data is deemed reliable but is not guaranteed accurate by Pillar 9â„¢. The trademarks MLS®, Multiple Listing Service® and the associated logos are owned by The Canadian Real Estate Association (CREA) and identify the quality of services provided by real estate professionals who are members of CREA. Used under license.