

\$1,000,000 - 5645 Lakeside Way, Innisfail

MLS® #A2212432

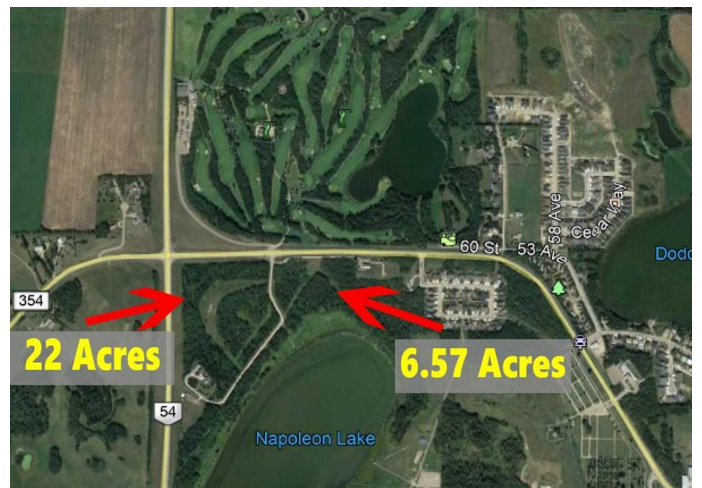
\$1,000,000

0 Bedroom, 0.00 Bathroom,
Land on 6.57 Acres

NONE, Innisfail, Alberta

****Endless Opportunity Awaits in Innisfail****

Location truly makes all the difference, and this 6.57-acre parcel of prime land has it all! Situated directly across from the prestigious Innisfail Golf Course and conveniently located on Hwy 42 within town limits, this property is a golden opportunity to make your mark in one of Alberta's most charming and promising communities. Currently zoned R-3, the possibilities are vast. With town approval, you could develop single-family homes, spacious acreage lots, or even consider other creative projects. This land also boasts a unique feature—a Napoleon Lake frontage area, adding serene natural beauty and incredible potential to your vision. ****Welcome to Innisfail**** Innisfail offers an unbeatable blend of small-town charm, natural beauty, and modern convenience. From the renowned golf course to the vibrant local culture, parks, and recreational opportunities, Innisfail is the perfect backdrop for a development that enhances the community. Strategically located near major highways, the town is poised for growth and provides the perfect environment for new ventures. ****Prime Land, Infinite Possibilities**** Whether you're a developer, builder, or dreamer, this exceptional property offers a rare opportunity to create something truly special. With its incredible location and unique features, it's more than just land—it's the foundation of your next great project.



Essential Information

| | |
|-----------|------------------|
| MLS® # | A2212432 |
| Price | \$1,000,000 |
| Bathrooms | 0.00 |
| Acres | 6.57 |
| Type | Land |
| Sub-Type | Residential Land |
| Status | Active |

Community Information

| | |
|-------------|-------------------|
| Address | 5645 Lakeside Way |
| Subdivision | NONE |
| City | Innisfail |
| County | Red Deer County |
| Province | Alberta |
| Postal Code | T4G 0H4 |

Exterior

| | |
|-----------------|--|
| Lot Description | Lake, Many Trees, Near Golf Course, Near Ski Hill, Private, Treed, Views |
|-----------------|--|

Additional Information

| | |
|----------------|------------------|
| Date Listed | April 21st, 2025 |
| Days on Market | 100 |
| Zoning | R-3 |

Listing Details

| | |
|----------------|------------------------------------|
| Listing Office | RE/MAX real estate central alberta |
|----------------|------------------------------------|

Data is supplied by Pillar 9â„¢ MLS® System. Pillar 9â„¢ is the owner of the copyright in its MLS® System. Data is deemed reliable but is not guaranteed accurate by Pillar 9â„¢. The trademarks MLS®, Multiple Listing Service® and the associated logos are owned by The Canadian Real Estate Association (CREA) and identify the quality of services provided by real estate professionals who are members of CREA. Used under license.