

\$259,000 - 110 Moberly Road, Grande Cache

MLS® #A2212831

\$259,000

4 Bedroom, 4.00 Bathroom, 1,568 sqft

Residential on 0.28 Acres

NONE, Grande Cache, Alberta

Great home to live and supplement your mortgage. This home on its second floor boosts 2 good sized rooms, plus master suite, with walk-in closet and 3 piece bathroom. Main floor includes living room, half bath and a spacious kitchen that is ready for your culinary masterpieces! Upper floor's secondary 3 piece bathroom also includes washer and dryer. Supplement your mortgage with the suite in the basement, featuring in floor heating, separate entrance, 1 bedroom , 1 bathroom full kitchen and living space and a washer/dryer unit.

Built in 2005

Essential Information

MLS® #	A2212831
Price	\$259,000
Bedrooms	4
Bathrooms	4.00
Full Baths	3
Half Baths	1
Square Footage	1,568
Acres	0.28
Year Built	2005
Type	Residential
Sub-Type	Semi Detached
Style	2 Storey, Side by Side
Status	Active



Community Information

Address	110 Moberly Road
Subdivision	NONE
City	Grande Cache
County	Greenview No. 16, M.D. of
Province	Alberta
Postal Code	T0E 0Y0

Amenities

Parking Spaces	3
Parking	Off Street

Interior

Interior Features	Walk-In Closet(s)
Appliances	Dishwasher, Dryer, Electric S
Heating	In Floor, Forced Air
Cooling	None
Fireplace	Yes
# of Fireplaces	1
Fireplaces	Gas
Has Basement	Yes
Basement	Exterior Entry, Finished, Full,

Exterior

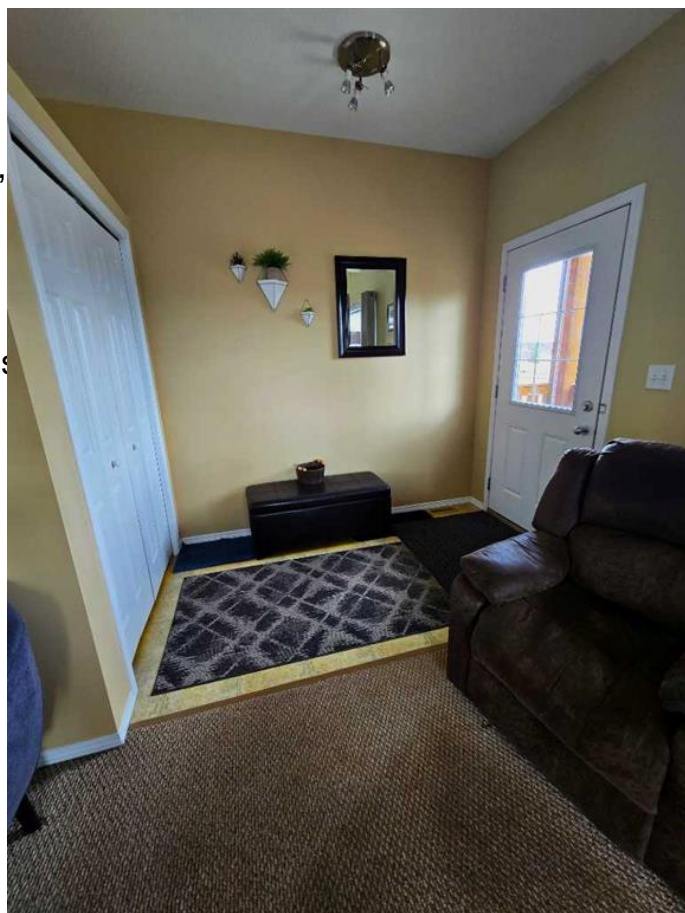
Exterior Features	None
Lot Description	Back Yard, Few Trees, Lands
Roof	Asphalt Shingle
Construction	Vinyl Siding
Foundation	Poured Concrete

Additional Information

Date Listed	April 16th, 2025
Days on Market	23
Zoning	RE

Listing Details

Listing Office	2% Realty Edge AB
----------------	-------------------



Data is supplied by Pillar 9â„¢ MLSÂ® System. Pillar 9â„¢ is the owner of the copyright in its MLSÂ® System. Data is deemed reliable but is not guaranteed accurate by Pillar 9â„¢. The trademarks MLSÂ®, Multiple Listing ServiceÂ® and the associated logos are owned by The Canadian Real Estate Association (CREA) and identify the quality of services

provided by real estate professionals who are members of CREA. Used under license.