

\$189,900 - 407, 9225 Lakeland Drive, Grande Prairie

MLS® #A2214538

\$189,900

2 Bedroom, 2.00 Bathroom, 864 sqft

Residential on 0.00 Acres

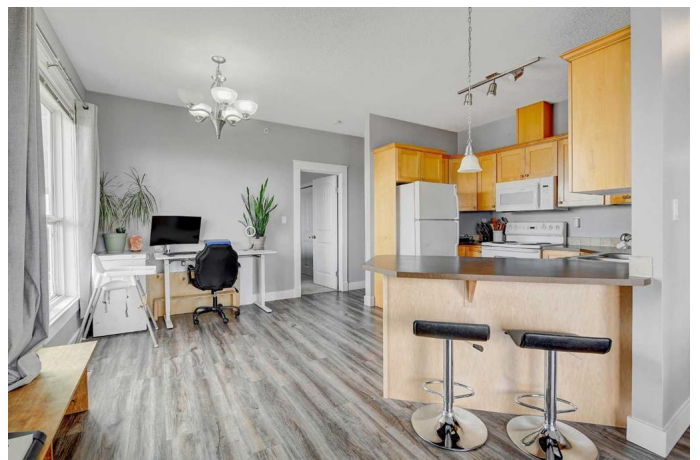
Lakeland., Grande Prairie, Alberta

*****TOP NORTHEAST CORNER UNIT! THEY ONLY MAKE 1 OF THESE*** SUPER WELL CARED FOR OWNER occupied 2-bedroom, 2-bathroom condo. Watch the sun come up and the wildlife! The master bedroom offers a private ensuite, while the large second bedroom has its own well-appointed bathroom, ensuring privacy and convenience for family or guests. The condo's bright and spacious living space is enhanced by large windows that fill the rooms with natural light. Nestled in a quiet building, you'll enjoy peace and serenity while still being close to all essential amenities. Located across the road from a school and shopping plaza. Grab this one of a kind condo today!**

Built in 2006

Essential Information

MLS® #	A2214538
Price	\$189,900
Bedrooms	2
Bathrooms	2.00
Full Baths	2
Square Footage	864
Acres	0.00
Year Built	2006
Type	Residential
Sub-Type	Apartment
Style	Multi Level Unit



Status Active

Community Information

Address 407, 9225 Lakeland Drive
Subdivision Lakeland.
City Grande Prairie
County Grande Prairie
Province Alberta
Postal Code T8X0B8

Amenities

Amenities Parking, Trash, Visitor Parking, Service Elevator(s)
Parking Spaces 3
Parking Stall

Interior

Interior Features See Remarks
Appliances See Remarks
Heating Boiler
Cooling None
of Stories 4

Exterior

Exterior Features Balcony
Construction See Remarks

Additional Information

Date Listed April 24th, 2025
Days on Market 6
Zoning RM

Listing Details

Listing Office Sutton Group Grande Prairie Professionals

Data is supplied by Pillar 9â„¸ MLSÂ® System. Pillar 9â„¸ is the owner of the copyright in its MLSÂ® System. Data is deemed reliable but is not guaranteed accurate by Pillar 9â„¸. The trademarks MLSÂ®, Multiple Listing ServiceÂ® and the associated logos are owned by The Canadian Real Estate Association (CREA) and identify the quality of services provided by real estate professionals who are members of CREA. Used under license.