

# \$165,000 - 308, 709 6 Avenue Se, Slave Lake

MLS® #A2215441

**\$165,000**

3 Bedroom, 1.00 Bathroom, 1,024 sqft

Residential on 0.00 Acres

NONE, Slave Lake, Alberta

3 bedroom condo close to everything including shopping, schools, churches, the dog park, and walking paths. Top floor corner unit with a nice size balcony to BBQ and relax. Built in 2013 this building is only 12 years old, is professionally managed and come with 2 parking stalls. Nice dark cabinets in the kitchen with plenty of storage and its' own insuite laundry. This makes a great home or investment property.

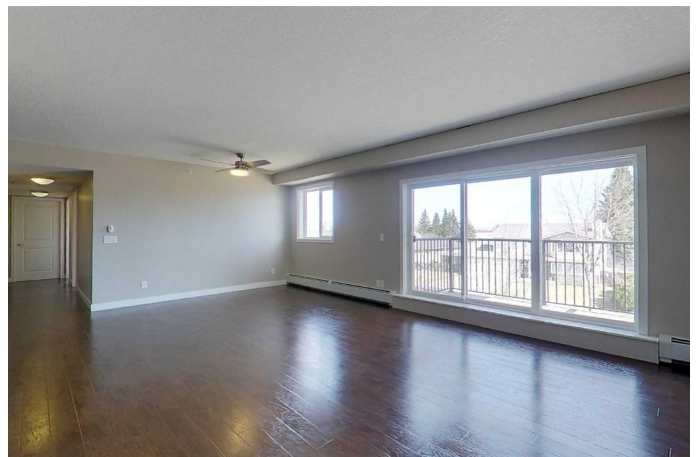
Built in 2013

## Essential Information

MLS® #	A2215441
Price	\$165,000
Bedrooms	3
Bathrooms	1.00
Full Baths	1
Square Footage	1,024
Acres	0.00
Year Built	2013
Type	Residential
Sub-Type	Apartment
Style	Single Level Unit
Status	Active

## Community Information

Address	308, 709 6 Avenue Se
Subdivision	NONE



City	Slave Lake
County	Lesser Slave River No. 124, M.D. of
Province	Alberta
Postal Code	T0G2A3

### **Amenities**

Amenities	Parking, Visitor Parking
Parking Spaces	2
Parking	Stall, Assigned

### **Interior**

Interior Features	Ceiling Fan(s), Laminate Counters, Soaking Tub, Vinyl Windows
Appliances	Dishwasher, Dryer, Refrigerator, Stove(s), Washer, Window Coverings
Heating	Forced Air
Cooling	Central Air
# of Stories	3

### **Exterior**

Exterior Features	Balcony
Construction	Brick, Vinyl Siding, Wood Frame

### **Additional Information**

Date Listed	April 29th, 2025
Zoning	R3A

### **Listing Details**

Listing Office	CENTURY 21 NORTHERN REALTY
----------------	----------------------------

Data is supplied by Pillar 9â„¢ MLS® System. Pillar 9â„¢ is the owner of the copyright in its MLS® System. Data is deemed reliable but is not guaranteed accurate by Pillar 9â„¢. The trademarks MLS®, Multiple Listing Service® and the associated logos are owned by The Canadian Real Estate Association (CREA) and identify the quality of services provided by real estate professionals who are members of CREA. Used under license.