

\$19,900 - 4927 49 Avenue, Edgerton

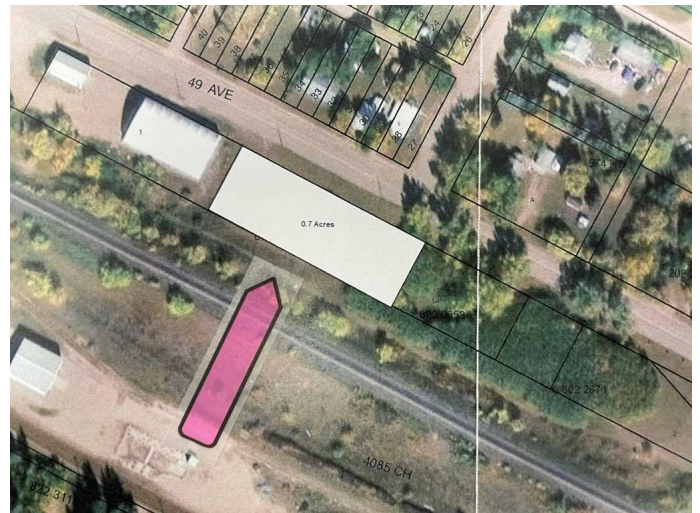
MLS® #A2216031

\$19,900

0 Bedroom, 0.00 Bathroom,
Land on 0.65 Acres

Edgerton, Edgerton, Alberta

If you're seeking high-visibility real estate with significant potential, this 0.7-acre commercial property located on the main highway through Edgerton checks every box. With dimensions of 100 feet by 283 feet, the lot offers both generous space and optimal exposure—perfect for a wide variety of business ventures. Positioned directly on the bustling highway that cuts through Edgerton, this parcel benefits from constant vehicle traffic and easy accessibility. Whether you're looking to build a retail storefront, a restaurant, service business, or an office space, this location offers maximum visibility and convenience for your future clientele.



Essential Information

| | |
|-----------|-----------------|
| MLS® # | A2216031 |
| Price | \$19,900 |
| Bathrooms | 0.00 |
| Acres | 0.65 |
| Type | Land |
| Sub-Type | Commercial Land |
| Status | Active |

Community Information

| | |
|-------------|----------------------------|
| Address | 4927 49 Avenue |
| Subdivision | Edgerton |
| City | Edgerton |
| County | Wainwright No. 61, M.D. of |

| | |
|-------------|---------|
| Province | Alberta |
| Postal Code | T0B 1K0 |

Additional Information

| | |
|----------------|------------------|
| Date Listed | April 29th, 2025 |
| Days on Market | 139 |
| Zoning | Commercial |

Listing Details

| | |
|----------------|---------------------------|
| Listing Office | CENTURY 21 CONNECT REALTY |
|----------------|---------------------------|

Data is supplied by Pillar 9â„¢ MLS® System. Pillar 9â„¢ is the owner of the copyright in its MLS® System. Data is deemed reliable but is not guaranteed accurate by Pillar 9â„¢. The trademarks MLS®, Multiple Listing Service® and the associated logos are owned by The Canadian Real Estate Association (CREA) and identify the quality of services provided by real estate professionals who are members of CREA. Used under license.