

# \$249,900 - 224 2 Avenue Ne, Slave Lake

---

MLS® #A2216677

## \$249,900

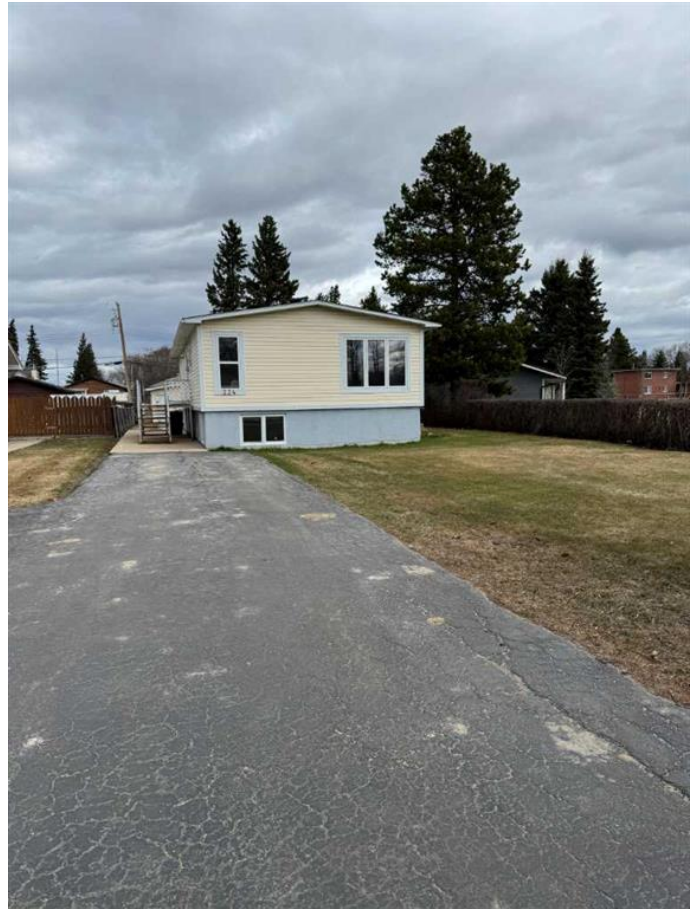
4 Bedroom, 3.00 Bathroom, 1,179 sqft

Residential on 0.22 Acres

NONE, Slave Lake, Alberta

GREAT NEIGHBORHOOD! 1178 sq ft 3 bedroom 3 bathroom home is waiting for you! Some love needed on the inside of the home to make more modern. Main level has vinyl windows from 2009. Downstairs has large windows that give the home a bi-level feel and a mother in law suit with kitchen, bedroom with huge walk in closet and a 4 pc bath. Spacious area in lower level for development. This home has a back lane with parking to detached double garage.

Built in 1973



## Essential Information

MLS® #	A2216677
Price	\$249,900
Bedrooms	4
Bathrooms	3.00
Full Baths	2
Half Baths	1
Square Footage	1,179
Acres	0.22
Year Built	1973
Type	Residential
Sub-Type	Detached
Style	Bungalow
Status	Active

## Community Information

Address 224 2 Avenue Ne

Subdivision NONE  
City Slave Lake  
County Lesser Slave River No. 124, 1  
Province Alberta  
Postal Code T0G 2A2

### Amenities

Parking Spaces 6  
Parking Asphalt, Double Garage Detached  
# of Garages 2

### Interior

Interior Features Ceiling Fan(s), Vinyl Windows  
Appliances Gas Stove  
Heating Forced Air  
Cooling None  
Has Basement Yes  
Basement Full, Partially Finished



### Exterior

Exterior Features None  
Lot Description Back Lane, Irregular Lot, Lawn, Street Lighting  
Roof Asphalt Shingle  
Construction Manufactured Floor Joist, Wood Frame  
Foundation Poured Concrete

### Additional Information

Date Listed April 30th, 2025  
Days on Market 7  
Zoning R1

### Listing Details

Listing Office ROYAL LEPAGE PROGRESSIVE REALTY

Data is supplied by Pillar 9â„¢ MLSÂ® System. Pillar 9â„¢ is the owner of the copyright in its MLSÂ® System. Data is deemed reliable but is not guaranteed accurate by Pillar 9â„¢. The trademarks MLSÂ®, Multiple Listing ServiceÂ® and the associated logos are owned by The Canadian Real Estate Association (CREA) and identify the quality of services provided by real estate professionals who are members of CREA. Used under license.