

# \$612,200 - 241 Chelsea Court, Chestermere

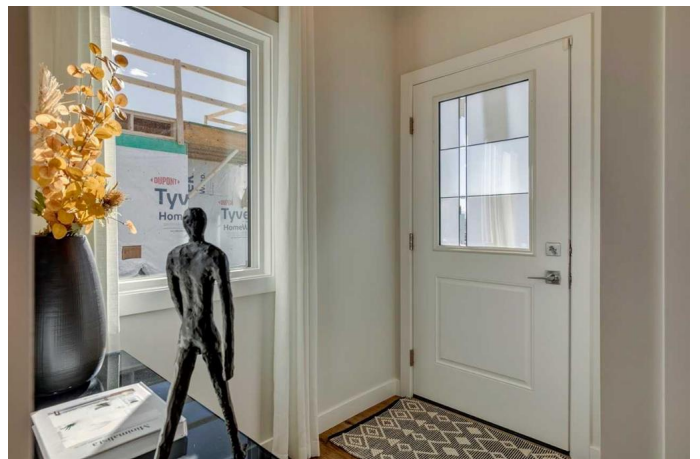
MLS® #A2216695

## \$612,200

3 Bedroom, 3.00 Bathroom, 1,853 sqft  
Residential on 0.08 Acres

Chelsea\_CH, Chestermere, Alberta

Discover the Hogan 4. Built by a trusted builder with over 70 years of experience, this home showcases on-trend, designer-curated interior selections tailored for a home that feels personalized to you. This energy-efficient home is Built Green certified and includes triple-pane windows, a high-efficiency furnace, and a solar chase for a solar-ready setup. With blower door testing that can offer up to may be eligible for up to 25% mortgage insurance savings, plus an electric car charger rough-in, itâ€™s designed for sustainable, future-forward living. Featuring a full suite of smart home technology, this home includes a programmable thermostat, ring camera doorbell, smart front door lock, smart and motion-activated switchesâ€”all seamlessly controlled via an Amazon Alexa touchscreen hub. Stainless Steel Washer and Dryer and Open Roller Blinds provided by Sterling Homes Calgary at no extra cost! \$2,500 landscaping credit is also provided by Sterling Homes Calgary until July 1st, 2025. The gourmet kitchen features stainless steel appliances, a gas range, Silgranit sink, walk-through pantry, and sleek tile backsplash. Enjoy 9' basement ceilings, side entrance, and a spacious upper floor bonus room with vaulted ceiling. The primary bedroom boasts a W.I.C. and upgraded tiled ensuite shower. Modern finishes include paint-grade railing with iron spindles, LVP flooring throughout the main floor and wet areas, and an electric fireplace with a wall-to-wall tile face. Relax on



the rear 9'-6"x11'-16" deck. Plus, your move will be stress-free with a concierge service provided by Sterling Homes Calgary that handles all your moving essentialsâ€”even providing boxes! Photos are a representative.

Built in 2024

**Essential Information**

MLS® #	A2216695
Price	\$612,200
Bedrooms	3
Bathrooms	3.00
Full Baths	2
Half Baths	1
Square Footage	1,853
Acres	0.08
Year Built	2024
Type	Residential
Sub-Type	Semi Detached
Style	2 Storey, Side by Side
Status	Active

**Community Information**

Address	241 Chelsea Court
Subdivision	Chelsea_CH
City	Chestermere
County	Chestermere
Province	Alberta
Postal Code	T1X2Z4

**Amenities**

Amenities	None
Parking Spaces	4
Parking	Double Garage Attached
# of Garages	2

**Interior**

Interior Features	French Door, Kitchen Island, Open Floorplan, Pantry, Separate
-------------------	---

	Entrance, Tankless Hot Water, Vaulted Ceiling(s), Walk-In Closet(s)
Appliances	Dishwasher, Gas Range, Microwave, Range Hood, Refrigerator, Tankless Water Heater
Heating	Forced Air, Natural Gas
Cooling	None
Fireplace	Yes
# of Fireplaces	1
Fireplaces	Decorative, Electric
Has Basement	Yes
Basement	Full, Unfinished

## Exterior

Exterior Features	Lighting
Lot Description	Back Yard
Roof	Asphalt Shingle
Construction	Stone, Vinyl Siding, Wood Frame
Foundation	Poured Concrete

## Additional Information

Date Listed	May 1st, 2025
Days on Market	68
Zoning	TBD
HOA Fees	200
HOA Fees Freq.	ANN

## Listing Details

Listing Office	Bode Platform Inc.
----------------	--------------------

Data is supplied by Pillar 9â„¢ MLS® System. Pillar 9â„¢ is the owner of the copyright in its MLS® System. Data is deemed reliable but is not guaranteed accurate by Pillar 9â„¢. The trademarks MLS®, Multiple Listing Service® and the associated logos are owned by The Canadian Real Estate Association (CREA) and identify the quality of services provided by real estate professionals who are members of CREA. Used under license.