

\$294,900 - 17 Greig Close, Red Deer

MLS® #A2216855

\$294,900

3 Bedroom, 2.00 Bathroom, 1,123 sqft

Residential on 0.08 Acres

Glendale Park Estates, Red Deer, Alberta

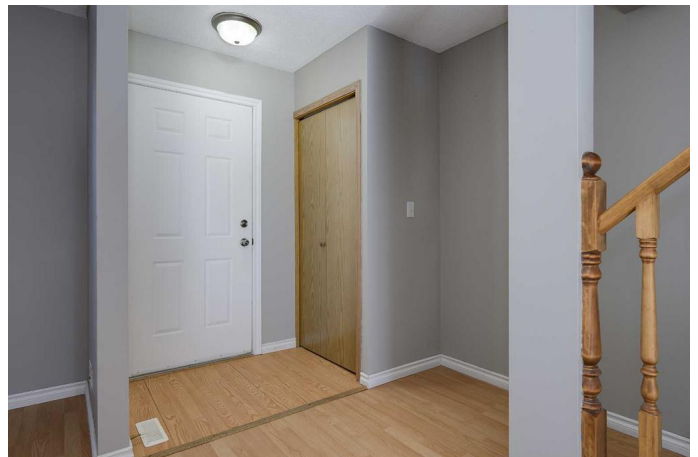
This townhouse has a good sized living room with wood burning fireplace on the main floor, 1 half bathroom and kitchen with recently replaced kitchen cabinets , back splash tile and counter tops. The second floor has 3 Bedrooms and master bedroom features his and her closets and 1 full bathroom also with newer cabinets. In the basement there is a second living room space and a separate room for the laundry which is rough in for another bathroom. This home is on a pie lot with an over-sized single detached garage with a paved lane way. There is a fully fenced private yard with a nice deck which boards were replaced a couple of years ago with pressure treated wood. There is a storage shed out back as well. Shingles on the house were replaced 3 years ago. Shingles on the garage and shed replaced 4 years. The New furnace was installed 4 years ago. All windows replaced with new 6 years ago. Located close to parks and St Teresa of Avila Elementary School. This is a perfect spot with just enough space for a young family starting out and at a manageable price. NOT A CONDO NO CONDO FEES

Built in 1987

Essential Information

MLS® # A2216855

Price \$294,900



| | |
|----------------|---------------|
| Bedrooms | 3 |
| Bathrooms | 2.00 |
| Full Baths | 1 |
| Half Baths | 1 |
| Square Footage | 1,123 |
| Acres | 0.08 |
| Year Built | 1987 |
| Type | Residential |
| Sub-Type | Row/Townhouse |
| Style | 2 Storey |
| Status | Active |

Community Information

| | |
|-------------|-----------------------|
| Address | 17 Greig Close |
| Subdivision | Glendale Park Estates |
| City | Red Deer |
| County | Red Deer |
| Province | Alberta |
| Postal Code | T4P 3L6 |

Amenities

| | |
|----------------|--|
| Parking Spaces | 3 |
| Parking | Double Garage Detached, Garage Faces Rear, Insulated |
| # of Garages | 2 |

Interior

| | |
|-------------------|--|
| Interior Features | See Remarks |
| Appliances | Dishwasher, Refrigerator, Stove(s), Washer/Dryer |
| Heating | Fireplace(s), Forced Air, Natural Gas |
| Cooling | None |
| Fireplace | Yes |
| # of Fireplaces | 1 |
| Fireplaces | Wood Burning |
| Has Basement | Yes |
| Basement | Full, Partially Finished |

Exterior

| | |
|-------------------|--|
| Exterior Features | Private Yard, Storage |
| Lot Description | Back Lane, Back Yard, Pie Shaped Lot, Private, Treed |

| | |
|--------------|--------------------------|
| Roof | Shake |
| Construction | Vinyl Siding, Wood Frame |
| Foundation | Poured Concrete |

Additional Information

| | |
|----------------|---------------|
| Date Listed | May 2nd, 2025 |
| Days on Market | 1 |
| Zoning | R1 |

Listing Details

| | |
|----------------|-----------------------------------|
| Listing Office | Royal LePage Network Realty Corp. |
|----------------|-----------------------------------|

Data is supplied by Pillar 9â„¢ MLS® System. Pillar 9â„¢ is the owner of the copyright in its MLS® System. Data is deemed reliable but is not guaranteed accurate by Pillar 9â„¢. The trademarks MLS®, Multiple Listing Service® and the associated logos are owned by The Canadian Real Estate Association (CREA) and identify the quality of services provided by real estate professionals who are members of CREA. Used under license.