

\$1,375,000 - 5708 Poplar Lane, Rural Grande Prairie No. 1, County of

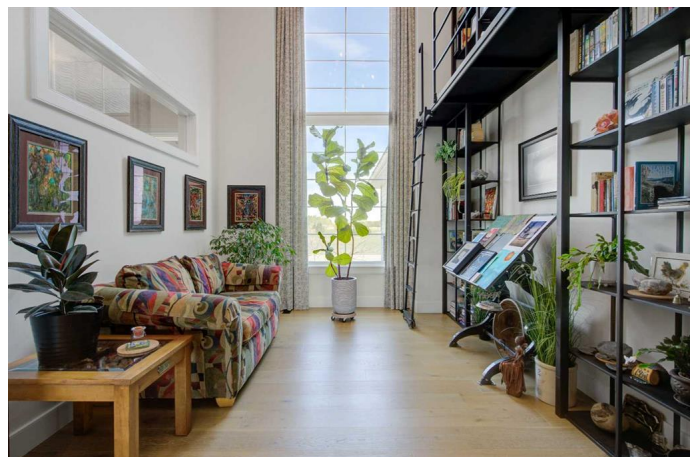
MLS® #A2218379

\$1,375,000

5 Bedroom, 4.00 Bathroom, 3,308 sqft
Residential on 0.54 Acres

Taylor Estates, Rural Grande Prairie No. 1,
County of, Alberta

Introducing a remarkable former Dream Home, expertly built in 2020 by HighMark Homes, this standout property is located in Grande Prairie's premier neighborhood, Taylor Estates. This impressive residence offers approximately 5800 sq ft of refined living, featuring 5 bedrooms and 3.5 bathrooms. The architectural design seamlessly blends modern aesthetics with rustic Scandinavian elegance, creating an atmosphere of timeless luxury. The extremely functional bungalow with bonus room floor plan caters to any demographic, featuring the primary bedroom, two additional bedrooms, 2.5 baths, an office area, and a laundry room all conveniently located on the main floor. Interior highlights include soaring ceilings, expansive windows, timber accents, a high-end kitchen with a full butler's pantry, a distinguished library, and a versatile bonus room complete with bunk beds, perfect for grandchildren or birthday sleepovers. The primary bedroom is a true retreat, boasting a luxurious ensuite with a floating double sink vanity, a freestanding tub, and an oversized walk-in shower. The lower level is designed for entertainment, complete with a gym area (including a climbing wall), a stylish full wet bar, an adjoining wine cellar, a craft/gaming room, a theatre room, two additional bedrooms, and a full bathroom. The impressive screened-in patio is heated and



features a power overhead door and wind screen, providing year-round enjoyment and additional daily living space. Premium exterior finishes, including stone, timber beams, tin accents, and durable Hardie siding, deliver commanding curb appeal. Situated on a desirable west-backing lot with a firepit and RV parking, this is a prime opportunity to own an exceptional property in Grande Prairie's most sought-after locale.

Built in 2020

Essential Information

MLS® #	A2218379
Price	\$1,375,000
Bedrooms	5
Bathrooms	4.00
Full Baths	3
Half Baths	1
Square Footage	3,308
Acres	0.54
Year Built	2020
Type	Residential
Sub-Type	Detached
Style	1 and Half Storey, Acreage with Residence
Status	Active

Community Information

Address	5708 Poplar Lane
Subdivision	Taylor Estates
City	Rural Grande Prairie No. 1, County of
County	Grande Prairie No. 1, County of
Province	Alberta
Postal Code	T8W 0L9

Amenities

Parking	Heated Garage, RV Access/Parking, Triple Garage Attached
# of Garages	3

Interior

Interior Features	Bar, Bookcases, Built-in Features, Double Vanity, High Ceilings, Kitchen Island, Open Floorplan, Pantry, Quartz Counters, Walk-In Closet(s), Wet Bar, Wired for Sound, Beamed Ceilings
Appliances	Dishwasher, Electric Stove, Refrigerator, Washer/Dryer
Heating	Forced Air, Natural Gas
Cooling	Central Air
Fireplace	Yes
# of Fireplaces	2
Fireplaces	Basement, Electric, Family Room, Gas, Living Room, Mantle
Has Basement	Yes
Basement	Finished, Full

Exterior

Exterior Features	Fire Pit, RV Hookup
Lot Description	Back Yard, Landscaped, Open Lot
Roof	Asphalt Shingle
Construction	Cement Fiber Board, Stone
Foundation	Poured Concrete

Additional Information

Date Listed	May 7th, 2025
Days on Market	4
Zoning	RE

Listing Details

Listing Office	Royal LePage - The Realty Group
----------------	---------------------------------

Data is supplied by Pillar 9â„¢ MLS® System. Pillar 9â„¢ is the owner of the copyright in its MLS® System. Data is deemed reliable but is not guaranteed accurate by Pillar 9â„¢. The trademarks MLS®, Multiple Listing Service® and the associated logos are owned by The Canadian Real Estate Association (CREA) and identify the quality of services provided by real estate professionals who are members of CREA. Used under license.