

\$1,250,000 - 3522 15 Street Sw, Calgary

MLS® #A2218656

\$1,250,000

6 Bedroom, 4.00 Bathroom, 2,525 sqft

Residential on 0.12 Acres

Altadore, Calgary, Alberta

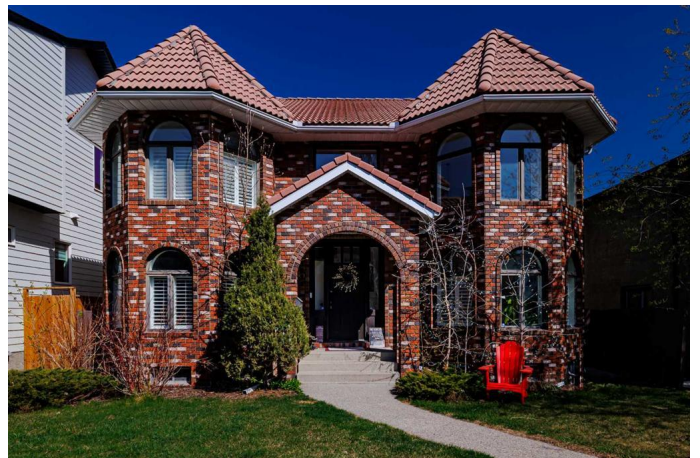
Welcome to this timeless 4-bedroom-up home with a full illegal basement suite, perfectly located in the heart of Altadore. Whether you're looking for a spacious family home with 3,826 sq.ft of developed living space, or a property with excellent potential, this one offers the best of both worlds.

The main level impresses with refinished oak hardwood floors, an open-concept layout, and a showstopping living room featuring 17-foot ceilings, arched windows, and a curved staircase with custom railings. Evenings come alive in the family room—curl up by the cozy fireplace and unwind in comfort.

The kitchen is both stylish and functional, with classic white cabinetry, granite countertops and backsplash, a full island with raised eating bar, and a cozy breakfast nook. You'll also find a generous dining area and a large laundry room on this level.

Upstairs, the home offers a family-friendly layout with four well-sized bedrooms, including a luxurious primary suite complete with a walk-in closet and spa-like ensuite with steam shower, soaker tub, and double vanities. A full bathroom completes the upper level.

Downstairs, the illegal basement suite provides great flexibility—perfect for extended family, guests, or future rental income. It includes two additional bedrooms, a large



living room, full kitchen, bathroom, storage area, and its own washer/dryer in the utility room.

Other features include an oversized attached double garage, a backyard stone patio, and a storage shed. Enjoy being just a short stroll from the shops, restaurants, and amenities of the vibrant Marda Loop.

Built in 1987

Essential Information

MLS® #	A2218656
Price	\$1,250,000
Bedrooms	6
Bathrooms	4.00
Full Baths	3
Half Baths	1
Square Footage	2,525
Acres	0.12
Year Built	1987
Type	Residential
Sub-Type	Detached
Style	2 Storey
Status	Active

Community Information

Address	3522 15 Street Sw
Subdivision	Altadore
City	Calgary
County	Calgary
Province	Alberta
Postal Code	T2T4A3

Amenities

Parking Spaces	4
Parking	Double Garage Attached
# of Garages	2

Interior

Interior Features	Breakfast Bar, Built-in Features, Closet Organizers, Double Vanity, Granite Counters, High Ceilings, Kitchen Island, Open Floorplan, Storage, Separate Entrance
Appliances	Dishwasher, Dryer, Garage Control(s), Gas Stove, Refrigerator, Washer, Window Coverings, Garburator
Heating	Forced Air
Cooling	None
Fireplace	Yes
# of Fireplaces	1
Fireplaces	Wood Burning
Has Basement	Yes
Basement	Finished, Full, Suite

Exterior

Exterior Features	Private Yard
Lot Description	Back Lane, Back Yard, City Lot, Front Yard
Roof	Clay Tile
Construction	Brick, Stucco, Wood Frame
Foundation	Poured Concrete

Additional Information

Date Listed	May 9th, 2025
Days on Market	67
Zoning	M-C1

Listing Details

Listing Office	Century 21 Masters
----------------	--------------------

Data is supplied by Pillar 9â„¢ MLS® System. Pillar 9â„¢ is the owner of the copyright in its MLS® System. Data is deemed reliable but is not guaranteed accurate by Pillar 9â„¢. The trademarks MLS®, Multiple Listing Service® and the associated logos are owned by The Canadian Real Estate Association (CREA) and identify the quality of services provided by real estate professionals who are members of CREA. Used under license.