

# \$198,500 - 14, 1809 47 Avenue, Lloydminster

MLS® #A2219279

**\$198,500**

3 Bedroom, 2.00 Bathroom, 1,046 sqft

Residential on 0.00 Acres

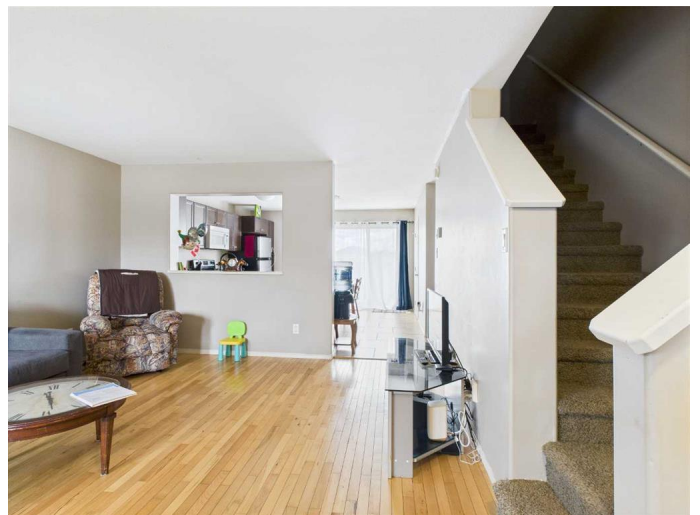
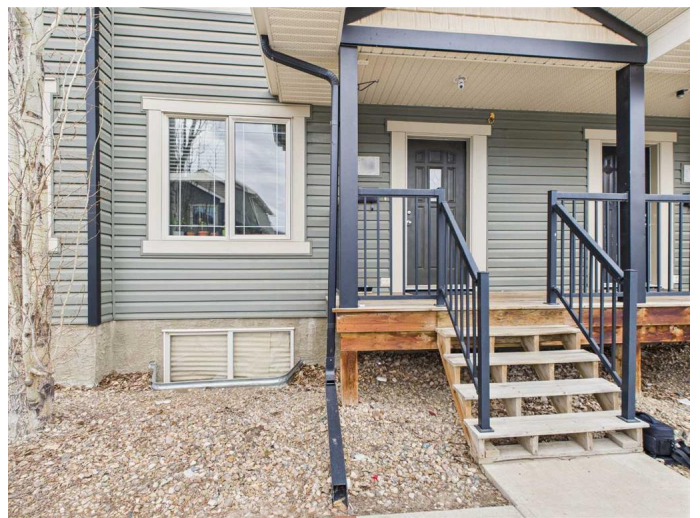
Wallacefield, Lloydminster, Saskatchewan

Visit REALTOR® website for additional information. This immaculate Duplex has been well taken care of. Built in 2011 the buildings had an Architectural Upgraded Design. The kitchen has Maple cabinets installed along with Quartz countertops and ceramic tile floor. The Living room features hardwood floors and lots of natural light. There is also a 2-pc bathroom on the main level. The upper level is where you will find the 3 bedrooms all with carpet flooring and a full 4 pc bathroom with ceramic tile floor. The basement is unfinished for you do design as you please.

Built in 2011

## Essential Information

MLS® #	A2219279
Price	\$198,500
Bedrooms	3
Bathrooms	2.00
Full Baths	1
Half Baths	1
Square Footage	1,046
Acres	0.00
Year Built	2011
Type	Residential
Sub-Type	Row/Townhouse
Style	2 Storey
Status	Active



## Community Information

Address	14, 1809 47 Avenue
Subdivision	Wallacefield
City	Lloydminster
County	Lloydminster
Province	Saskatchewan
Postal Code	S9V 1W3

## Amenities

Amenities	None
Parking Spaces	2
Parking	Stall

## Interior

Interior Features	Stone Counters, Walk-In Closet(s)
Appliances	Dishwasher, Dryer, Microwave Hood Fan, Refrigerator, Stove(s), Washer
Heating	Forced Air
Cooling	None
# of Stories	2
Has Basement	Yes
Basement	Full, Unfinished

## Exterior

Exterior Features	Other
Lot Description	Landscaped, Rectangular Lot
Roof	Asphalt Shingle
Construction	Vinyl Siding, Wood Frame
Foundation	Poured Concrete

## Additional Information

Date Listed	May 9th, 2025
Days on Market	5
Zoning	R4

## Listing Details

Listing Office	PG Direct Realty Ltd.
----------------	-----------------------

Data is supplied by Pillar 9â„¢ MLSÂ® System. Pillar 9â„¢ is the owner of the copyright in its MLSÂ® System. Data is deemed reliable but is not guaranteed accurate by Pillar 9â„¢. The trademarks MLSÂ®, Multiple Listing ServiceÂ® and the associated logos are owned by The Canadian Real Estate Association (CREA) and identify the quality of services

provided by real estate professionals who are members of CREA. Used under license.