

\$975,000 - 110, 333 6 Street S, Lethbridge

MLS® #A2219650

\$975,000

0 Bedroom, 0.00 Bathroom,
Commercial on 0.36 Acres

Downtown, Lethbridge, Alberta

Amazing owner occupancy, own 1 side and lease out the other side, or lease out both sides and enjoy the income. Great downtown location in a vibrant location with lots of redevelopment.



Essential Information

MLS® #	A2219650
Price	\$975,000
Bathrooms	0.00
Acres	0.36
Type	Commercial
Sub-Type	Retail
Status	Active



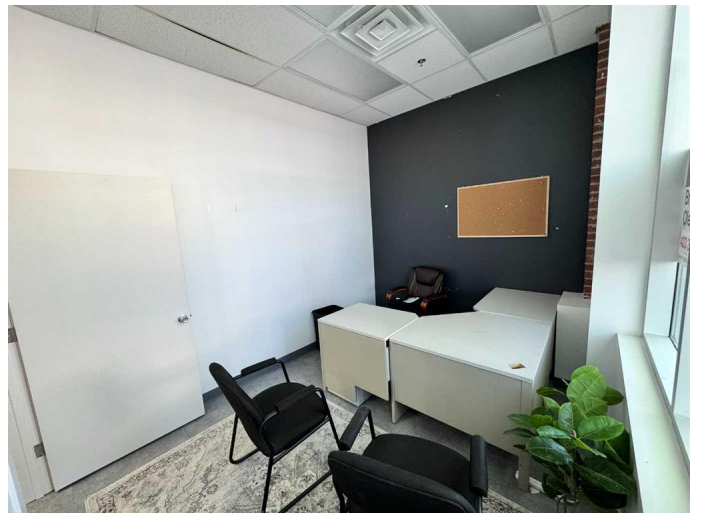
Community Information

Address	110, 333 6 Street S
Subdivision	Downtown
City	Lethbridge
County	Lethbridge
Province	Alberta
Postal Code	T1J0N6

Additional Information

Date Listed	May 12th, 2025
Days on Market	186
Zoning	C-D

Listing Details



Listing Office

Royal LePage South Country - Lethbridge

Data is supplied by Pillar 9â„¸ MLSÂ® System. Pillar 9â„¸ is the owner of the copyright in its MLSÂ® System. Data is deemed reliable but is not guaranteed accurate by Pillar 9â„¸. The trademarks MLSÂ®, Multiple Listing ServiceÂ® and the associated logos are owned by The Canadian Real Estate Association (CREA) and identify the quality of services provided by real estate professionals who are members of CREA. Used under license.