

\$589,900 - 104 Templeside Place Ne, Calgary

MLS® #A2219661

\$589,900

5 Bedroom, 4.00 Bathroom, 1,474 sqft

Residential on 0.12 Acres

Temple, Calgary, Alberta

Singles were replace last year. Large bungalow on corner lot with attached carport. Long term tenants were paying 4,100/month. Good revenue potential or live up rent down. Listing agent has owned the house since 2007. Large windows in basement. All tenants were notified that new owners may request vacant possession. Tenants would like to stay but prepared to move with short notice. Main floor tenants have moved to prepare for sale. Basement tenants pay 1,100 for larger 1 bedroom and 1,000 for other suite.

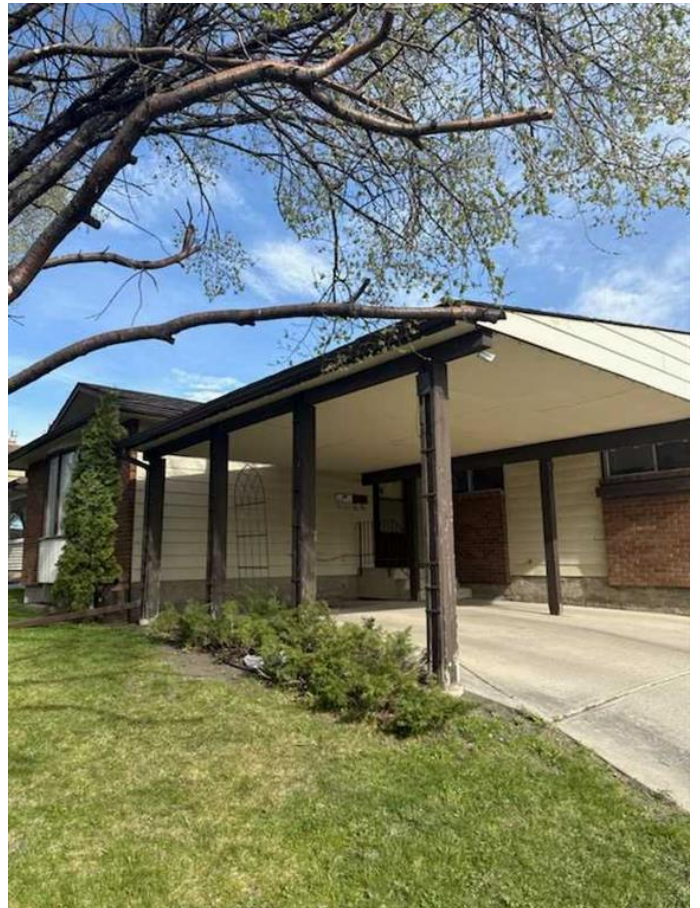
Built in 1977

Essential Information

MLS® #	A2219661
Price	\$589,900
Bedrooms	5
Bathrooms	4.00
Full Baths	4
Square Footage	1,474
Acres	0.12
Year Built	1977
Type	Residential
Sub-Type	Detached
Style	Bungalow
Status	Active

Community Information

Address 104 Templeside Place Ne



Subdivision	Temple
City	Calgary
County	Calgary
Province	Alberta
Postal Code	T1Y 3M2

Amenities

Parking Spaces	1
Parking	Attached Carport

Interior

Interior Features	See Remarks
Appliances	Electric Range, Electric Stove, Refrigerator, Washer/Dryer
Heating	Forced Air
Cooling	None
Fireplace	Yes
# of Fireplaces	1
Fireplaces	Wood Burning
Has Basement	Yes
Basement	Exterior Entry, Full, Suite

Exterior

Exterior Features	Other
Lot Description	Back Lane, Corner Lot
Roof	Asphalt Shingle
Construction	Brick, Wood Frame
Foundation	Poured Concrete

Additional Information

Date Listed	May 9th, 2025
Days on Market	2
Zoning	R-CG

Listing Details

Listing Office	First Place Realty
----------------	--------------------

Data is supplied by Pillar 9â„¢ MLS® System. Pillar 9â„¢ is the owner of the copyright in its MLS® System. Data is deemed reliable but is not guaranteed accurate by Pillar 9â„¢. The trademarks MLS®, Multiple Listing Service® and the associated logos are owned by The Canadian Real Estate Association (CREA) and identify the quality of services provided by real estate professionals who are members of CREA. Used under license.