

\$388,888 - 2202, 6 Merganser Drive W, Chestermere

MLS® #A2223434

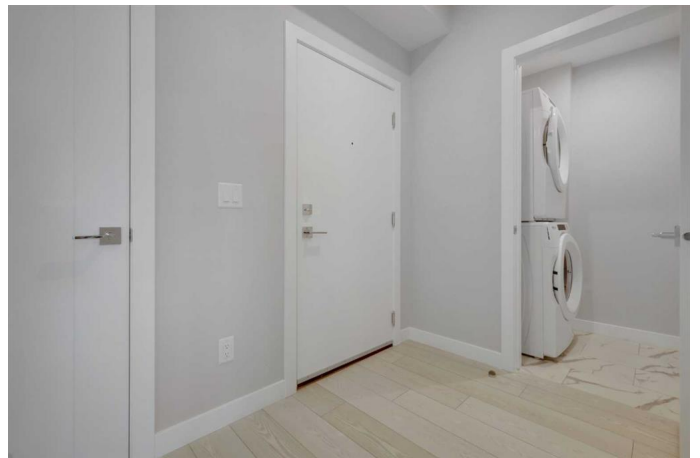
\$388,888

3 Bedroom, 2.00 Bathroom, 842 sqft
Residential on 0.00 Acres

Chelsea_CH, Chestermere, Alberta

Step into Lockwoodâ€™an impressive 3-bedroom, 2-bath corner unit located in the thriving new community of Chelsea, Chestermere. This home includes 1 titled parking stall and sits just minutes from Chestermere Lake, offering quick access to parks, playgrounds, walking paths, and year-round outdoor recreation. Enjoy the convenience of nearby retail and dining options at Chestermere Station and Chestermere Crossing, making daily living both easy and enjoyable.

Designed with comfort and functionality in mind, this stylish unit features an open-concept layout with luxury vinyl plank flooring, high ceilings, and a south-facing oversized balcony that welcomes in plenty of natural lightâ€™perfect for morning coffee, evening relaxation, or summer entertaining. The kitchen is thoughtfully designed with full-height cabinetry, soft-close hardware, quartz countertops, a stainless steel appliance package, and a spacious eat-up bar, offering a seamless space for cooking and entertaining. A walk-in pantry adds even more storage and convenience. The primary suite offers a peaceful escape with a generous walk-through closet leading to a private 3-piece ensuite. Two additional bedrooms provide ample space for family, guests, or a home office, and are complemented by a beautifully finished 4-piece bathroom. Residents also enjoy access to premium building amenities, including a



modern fitness centre, an ownersâ€™ lounge for gatherings, and secure bike storage, perfect for exploring the surrounding community. Bright, functional, and finished to perfection, this home is move-in ready and offers a fantastic opportunity to enjoy one of Chestermereâ€™s most up-and-coming neighbourhoods.

Built in 2025

Essential Information

MLS® #	A2223434
Price	\$388,888
Bedrooms	3
Bathrooms	2.00
Full Baths	2
Square Footage	842
Acres	0.00
Year Built	2025
Type	Residential
Sub-Type	Apartment
Style	Single Level Unit
Status	Active

Community Information

Address	2202, 6 Merganser Drive W
Subdivision	Chelsea_CH
City	Chestermere
County	Chestermere
Province	Alberta
Postal Code	T1X 2Y2

Amenities

Amenities	Elevator(s), Fitness Center, Parking, Party Room, Recreation Room, Snow Removal, Storage, Trash, Visitor Parking
Parking Spaces	1
Parking	Underground

Interior

Interior Features	High Ceilings, Kitchen Island, No Animal Home, No Smoking Home, Open Floorplan, Pantry, Quartz Counters, Walk-In Closet(s), Tray Ceiling(s)
Appliances	Dishwasher, Electric Range, Microwave Hood Fan, Refrigerator, Washer/Dryer, Window Coverings
Heating	Baseboard
Cooling	None
# of Stories	4

Exterior

Exterior Features	Balcony
Construction	Composite Siding, Wood Frame

Additional Information

Date Listed	May 21st, 2025
Days on Market	25
Zoning	M-2

Listing Details

Listing Office	RE/MAX Real Estate (Central)
----------------	------------------------------

Data is supplied by Pillar 9â„¢ MLS® System. Pillar 9â„¢ is the owner of the copyright in its MLS® System. Data is deemed reliable but is not guaranteed accurate by Pillar 9â„¢. The trademarks MLS®, Multiple Listing Service® and the associated logos are owned by The Canadian Real Estate Association (CREA) and identify the quality of services provided by real estate professionals who are members of CREA. Used under license.