

# \$1,499,900 - 25579 Twp Rd 382, Rural Red Deer County

MLS® #A2223876

**\$1,499,900**

5 Bedroom, 4.00 Bathroom, 1,678 sqft

Agri-Business on 39.88 Acres

Joffre Bridge, Rural Red Deer County, Alberta

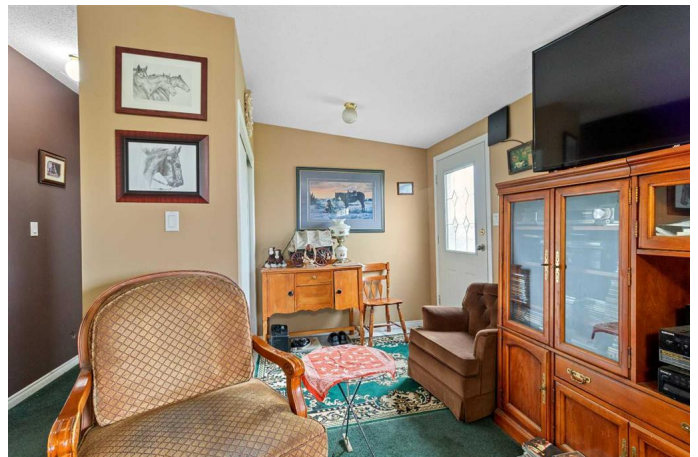
Welcome to this unique farm within minutes of Red Deer being used to raise and train horses and a handful of chickens too. Two complete fully finished homes, one is 28 x 52 with a 12 x 20 addition, the other is 14 x 69 with a 12 x 46 addition both sitting on pilings and wooden crate blocking. Each home comes with Fridge, Stove, Dishwasher and Washer / Dryer. Also included are all window coverings and ceiling fans. Shingles replaced on both homes 3 years ago, and water well pump is only 2 years old. Farm buildings include a 32 x 64 barn with plenty of horse stalls, pens and a training round ring. Outside buildings include Gazebo, sheds, wellhouse with water softener and manifold to control water every where on the farm. There are chicken sheds, horse shelters, 3 horse waterers, 3 hydrants and the homes have a shared septic tank and field. A one of a kind set up to live and run a horse boarding facility, and to have a residence for your staff. The view in all directions is awesome, from the south valley down to the flowing creek, to the horizon area looking over Joffre Bridge. A very quiet and peaceful location. Come take a look !

Built in 2003

## Essential Information

MLS® # A2223876

Price \$1,499,900



Bedrooms	5
Bathrooms	4.00
Full Baths	4
Square Footage	1,678
Acres	39.88
Year Built	2003
Type	Agri-Business
Sub-Type	Agriculture
Status	Active

### Community Information

Address	25579 Twp Rd 382
Subdivision	Joffre Bridge
City	Rural Red Deer County
County	Red Deer County
Province	Alberta
Postal Code	T4N 5E2

### Interior

Interior Features	Ceiling Fan(s), Laminate Counters, Open Floorplan, Separate Entrance, Storage, Vinyl Windows
Appliances	Dishwasher, Refrigerator, Stove(s), Washer/Dryer
Heating	Forced Air, Propane

### Exterior

Exterior Features	Private Entrance, Private Yard, Rain Barrel/Cistern(s)
Roof	Asphalt Shingle

### Additional Information

Date Listed	May 23rd, 2025
Days on Market	77
Zoning	AG

### Listing Details

Listing Office	Royal LePage Network Realty Corp.
----------------	-----------------------------------

Data is supplied by Pillar 9â„¢ MLS® System. Pillar 9â„¢ is the owner of the copyright in its MLS® System. Data is deemed reliable but is not guaranteed accurate by Pillar 9â„¢. The trademarks MLS®, Multiple Listing Service® and the associated logos are owned by The Canadian Real Estate Association (CREA) and identify the quality of services provided by real estate professionals who are members of CREA. Used under license.