

# \$534,000 - 60 Terrace Close Ne, Medicine Hat

MLS® #A2225346

**\$534,000**

4 Bedroom, 2.00 Bathroom, 1,232 sqft

Residential on 0.13 Acres

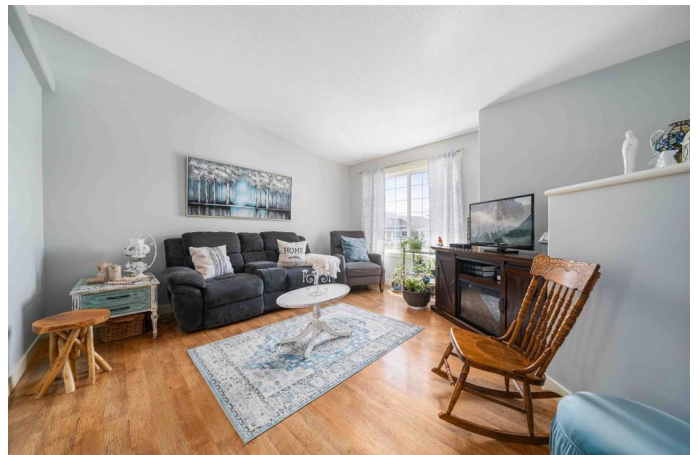
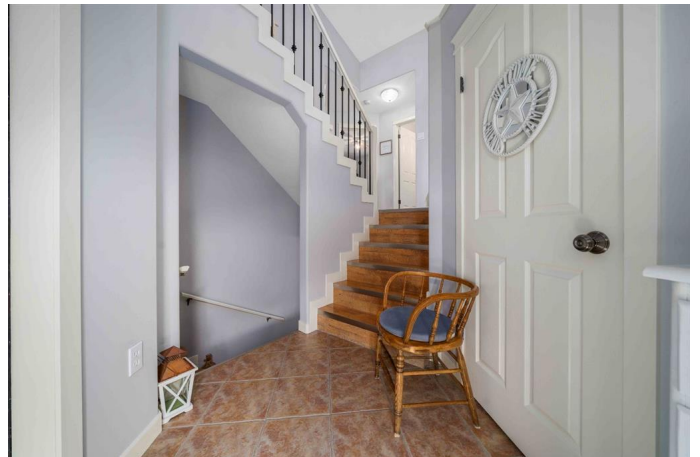
Terrace, Medicine Hat, Alberta

**\*\*Welcome to 60 Terrace Close â€“ Fantastic Family Home, Garage, 3 Car Carport !\*\***  
Ideally located just **\*\*two blocks from Dr. Ken Sauer School and nearby playgrounds\*\***, this exceptional property is perfect for families, professionals, and anyone seeking a well-rounded, move-in-ready home in a peaceful, community-oriented neighborhood. Step inside to discover a bright, open-concept kitchen made for entertaining, a beautifully finished basement ideal for family time or hosting guests, and abundant storage throughout. Every corner of this home has been thoughtfully designed with comfort and functionality in mind.

**\*\*Storage and parking are no issue here!\*\***  
You'll enjoy an **\*\*attached double car garage\*\***, PLUS a **\*\*3-car carport with secure, lockable storage\*\*** thatâ€™s easily accessible from the **\*\*back alley\*\*** â€“ an ideal setup for home-based businesses, hobbyists, or anyone needing quick, reliable access to tools, equipment, or toys.

Outside, the backyard is a true retreat featuring low-maintenance landscaping, a covered pergola, electric awning, and even a charming she-shed â€“ the perfect place to relax, create, or escape.

With its incredible curb appeal, modern interior, and bonus features that elevate everyday living, **\*\*60 Terrace Close is a rare find\*\*** in one of Medicine Hatâ€™s sought-after areas. **\*\*Donâ€™t miss your chance to call this versatile and beautifully**



maintained property your next home.

Built in 2005

### Essential Information

MLS® #	A2225346
Price	\$534,000
Bedrooms	4
Bathrooms	2.00
Full Baths	2
Square Footage	1,232
Acres	0.13
Year Built	2005
Type	Residential
Sub-Type	Detached
Style	Bi-Level
Status	Active

### Community Information

Address	60 Terrace Close Ne
Subdivision	Terrace
City	Medicine Hat
County	Medicine Hat
Province	Alberta
Postal Code	T1C2A8

### Amenities

Parking Spaces	4
Parking	Carport, Double Garage Attached, Off Street
# of Garages	2

### Interior

Interior Features	See Remarks, Walk-In Closet(s)
Appliances	Central Air Conditioner, Dishwasher, Electric Range, Microwave Hood Fan, Refrigerator, Washer/Dryer, Water Softener
Heating	Forced Air
Cooling	Central Air
Fireplace	Yes
# of Fireplaces	2

Fireplaces	Electric, Gas
Has Basement	Yes
Basement	Finished, Full

## Exterior

Exterior Features	Awning(s), BBQ gas line, Covered Courtyard, Storage
Lot Description	Back Lane, Cul-De-Sac
Roof	Asphalt Shingle
Construction	Brick, Vinyl Siding
Foundation	Poured Concrete

## Additional Information

Date Listed	May 29th, 2025
Days on Market	22
Zoning	R-LD

## Listing Details

Listing Office	RIVER STREET REAL ESTATE
----------------	--------------------------

Data is supplied by Pillar 9â„¢ MLS® System. Pillar 9â„¢ is the owner of the copyright in its MLS® System. Data is deemed reliable but is not guaranteed accurate by Pillar 9â„¢. The trademarks MLS®, Multiple Listing Service® and the associated logos are owned by The Canadian Real Estate Association (CREA) and identify the quality of services provided by real estate professionals who are members of CREA. Used under license.