

\$2 - 900 Pine Road, Strathmore

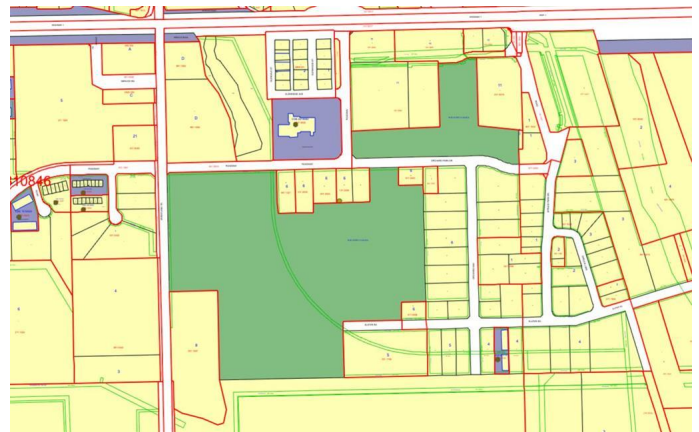
MLS® #A2225785

\$2

0 Bedroom, 0.00 Bathroom,
Land on 61.65 Acres

Orchard Business Park, Strathmore, Alberta

~ Rare Industrial/Commercial Land Opportunity ~ 65 Acres +/- (or Portion Thereof) ~ An exceptional opportunity to lease prime industrial/commercial zoned land, ideally suited for storage and related uses (no hazardous uses permitted). Offering up to 61.65 acres, with the flexibility to lease smaller portions, this site is a rare find in today's market. Strategically located just 2 blocks from the TransCanada Highway, the property ensures excellent access and logistical efficiency. With a competitive rental rate of approximately \$2.00 per square foot annually, this site offers significant value for businesses seeking secure outdoor space. The landlord is open to negotiating site preparation and fencing to meet your operational and security requirements. Don't miss out on this versatile and ideally located property ~ perfect for contractors, equipment storage, or commercial yard use. Contact us today to discuss your needs and arrange a viewing.



Essential Information

MLS® #	A2225785
Price	\$2
Bathrooms	0.00
Acres	61.65
Type	Land
Sub-Type	Commercial Land
Status	Active

Community Information

Address	900 Pine Road
Subdivision	Orchard Business Park
City	Strathmore
County	Wheatland County
Province	Alberta
Postal Code	T0J3H0

Additional Information

Date Listed	May 29th, 2025
Days on Market	62
Zoning	UR

Listing Details

Listing Office	CIR Realty
----------------	------------

Data is supplied by Pillar 9â„¢ MLS® System. Pillar 9â„¢ is the owner of the copyright in its MLS® System. Data is deemed reliable but is not guaranteed accurate by Pillar 9â„¢. The trademarks MLS®, Multiple Listing Service® and the associated logos are owned by The Canadian Real Estate Association (CREA) and identify the quality of services provided by real estate professionals who are members of CREA. Used under license.