

# \$2,500 - 8610 102b Avenue, Grande Prairie

MLS® #A2228632

## \$2,500

3 Bedroom, 3.00 Bathroom, 1,236 sqft

Rental on 0.00 Acres

Crystal Landing, Grande Prairie, Alberta

3 bedrooms, 2.5 bathrooms full house in Crystal Landing!

Main floor features a large south facing living room which leads into the kitchen. The kitchen features open layout with large dining room. Convenient half bath off the kitchen and access to rear deck and back yard.

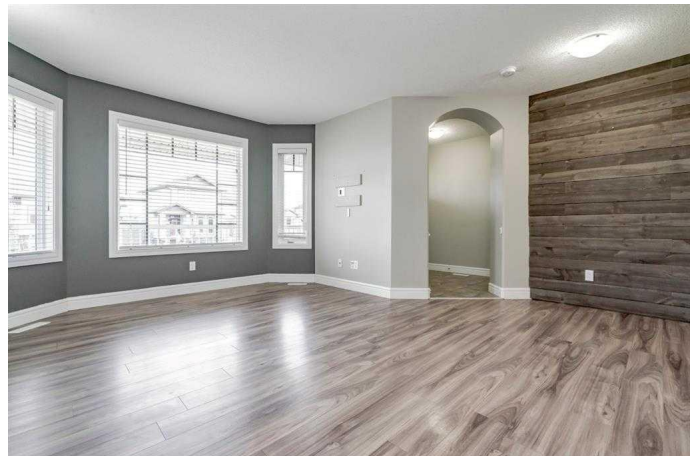
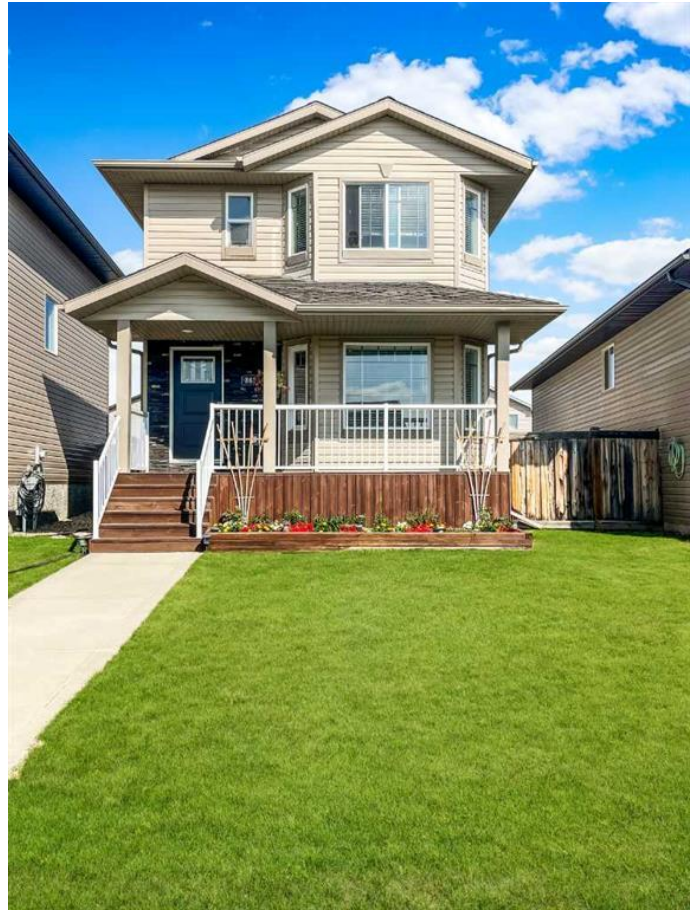
Upstairs features the primary bedroom, with ensuite and walk in closet. Two more bedrooms and another full bath complete the upper level. Unfinished basement offers heated storage and laundry.

Large back deck and large fully fenced yard with shed.

Two paved parking spots off the backyard.

\*Dog Friendly with owner approval & \$50/mo pet fee\*

Application required prior to viewing.



## Essential Information

MLS® #	A2228632
Price	\$2,500
Bedrooms	3
Bathrooms	3.00
Full Baths	2
Half Baths	1
Square Footage	1,236
Acres	0.00
Type	Rental
Status	Active

## Community Information

Address	8610 102b Avenue
Subdivision	Crystal Landing
City	Grande Prairie
County	Grande Prairie
Province	Alberta
Postal Code	T8X0B5

## Amenities

Parking	Parking Pad
---------	-------------

## Interior

Appliances	Dishwasher, Microwave Hood Fan, Oven, Refrigerator, Stove(s), Washer/Dryer
------------	----------------------------------------------------------------------------

## Exterior

Roof	Asphalt Shingle
------	-----------------

## Additional Information

Date Listed	June 6th, 2025
Days on Market	1

## Listing Details

Listing Office	Grassroots Realty Group Ltd.
----------------	------------------------------

Data is supplied by Pillar 9â„¢ MLS® System. Pillar 9â„¢ is the owner of the copyright in its MLS® System. Data is deemed reliable but is not guaranteed accurate by Pillar 9â„¢. The trademarks MLS®, Multiple Listing Service® and the associated logos are owned by The Canadian Real Estate Association (CREA) and identify the quality of services provided by real estate professionals who are members of CREA. Used under license.