

\$749,900 - 30207 Range Road 55, Rural Mountain View County

MLS® #A2229739

\$749,900

1 Bedroom, 1.00 Bathroom, 841 sqft
Residential on 10.01 Acres

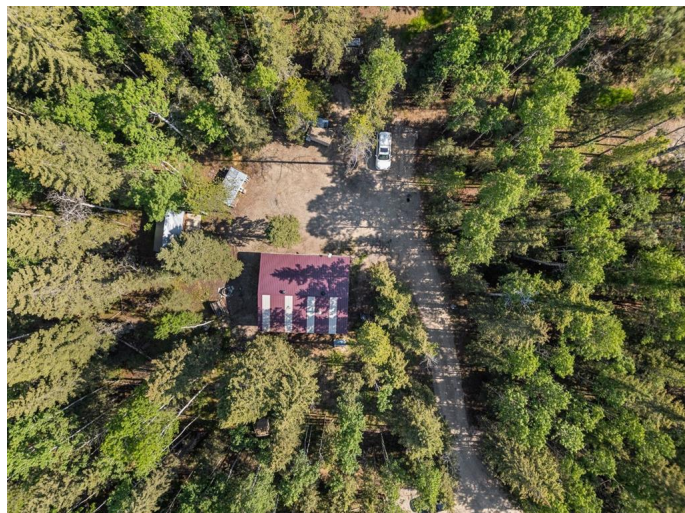
NONE, Rural Mountain View County, Alberta

Tucked away in the tall timber just outside Cremona and steps from the local favourite, Fallen Timber Meadery, this year-round retreat is serving up laid-back living with a side of peace and quiet.

The upgraded 800+ sqft cabin features warm wood tones, a fully enclosed bedroom, stylish new flooring throughout, and a bathroom that blends rustic metal and modern charm (yes, thatâ€™s a soaking tub with wine serviceâ€”donâ€™t mind if we do). A cozy living area, spacious eat-in kitchen, and a primary with a view make this more than just a weekend getawayâ€”itâ€™s got all the comfort of home, without the noise.

Outside, 10 private acres offer the ultimate no neighbours in sight energy. Whether youâ€™re watching the stars from the covered porch, exploring the woods, or heading down the road for a mead tasting, this is where the wild things rest. Your home away from home or your home in the woods also offers additional cleared parking for your guests, or all of your goodies

Need a bit more space? The barn-style outbuilding includes a full upper-level flex space thatâ€™s perfect for weekend guests, creative escapes, or gear storage. This space is also powered, offering the ultimate



â€œextraâ€• on this property.

No matter how you use itâ€”retreat, rental, or
hideawayâ€”itâ€™s better out here.

Built in 2013

Essential Information

| | |
|----------------|---------------------------------------|
| MLS® # | A2229739 |
| Price | \$749,900 |
| Bedrooms | 1 |
| Bathrooms | 1.00 |
| Full Baths | 1 |
| Square Footage | 841 |
| Acres | 10.01 |
| Year Built | 2013 |
| Type | Residential |
| Sub-Type | Detached |
| Style | Acreage with Residence, Cottage/Cabin |
| Status | Active |

Community Information

| | |
|-------------|----------------------------|
| Address | 30207 Range Road 55 |
| Subdivision | NONE |
| City | Rural Mountain View County |
| County | Mountain View County |
| Province | Alberta |
| Postal Code | T0M0R0 |

Amenities

| | |
|----------------|-----------------------|
| Utilities | Electricity Connected |
| Parking Spaces | 6 |
| Parking | Parking Pad |

Interior

| | |
|-------------------|--|
| Interior Features | Closet Organizers, Laminate Counters, Open Floorplan |
| Appliances | Electric Oven, Refrigerator |
| Heating | Baseboard, Electric, Fireplace(s), Wood |
| Cooling | None |

| | |
|-----------------|--------------------|
| Fireplace | Yes |
| # of Fireplaces | 1 |
| Fireplaces | Wood Burning Stove |
| Basement | None |

Exterior

| | |
|-------------------|----------------------------|
| Exterior Features | Fire Pit, Storage |
| Lot Description | Cleared, Many Trees, Treed |
| Roof | Metal |
| Construction | Mixed, Wood Frame |
| Foundation | Piling(s) |

Additional Information

| | |
|----------------|-----------------|
| Date Listed | June 11th, 2025 |
| Days on Market | 7 |
| Zoning | AG2 |

Listing Details

| | |
|----------------|------------|
| Listing Office | CIR Realty |
|----------------|------------|

Data is supplied by Pillar 9â„¢ MLS® System. Pillar 9â„¢ is the owner of the copyright in its MLS® System. Data is deemed reliable but is not guaranteed accurate by Pillar 9â„¢. The trademarks MLS®, Multiple Listing Service® and the associated logos are owned by The Canadian Real Estate Association (CREA) and identify the quality of services provided by real estate professionals who are members of CREA. Used under license.