

\$545,000 - 612 Aquitania Boulevard W, Lethbridge

MLS® #A2230894

\$545,000

4 Bedroom, 2.00 Bathroom, 1,072 sqft

Residential on 0.09 Acres

Garry Station, Lethbridge, Alberta

WHAT A LOVELY STRANVILLE BUILT HOME JUST WAITING FOR YOUR OCCUPANCY IN THE SUPPER AREA OF GARY STATION

Built in 2015

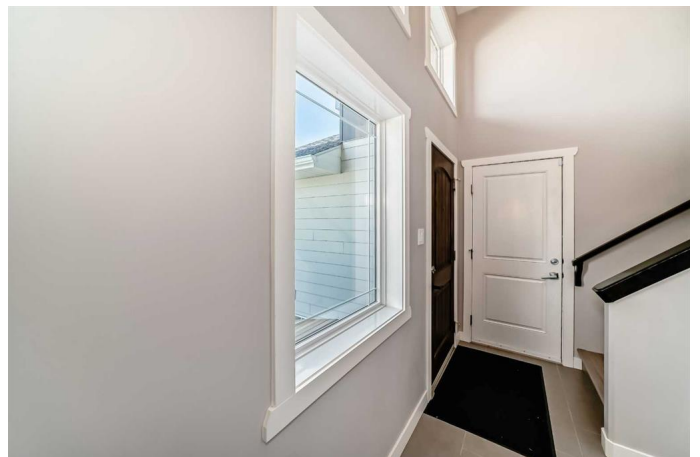
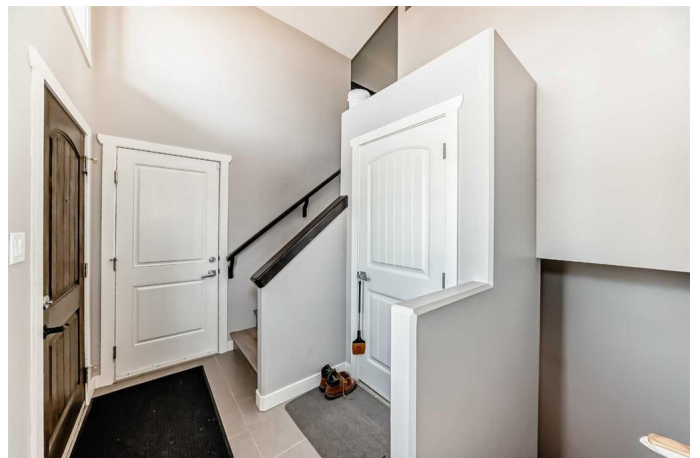
Essential Information

| | |
|----------------|-------------------|
| MLS® # | A2230894 |
| Price | \$545,000 |
| Bedrooms | 4 |
| Bathrooms | 2.00 |
| Full Baths | 2 |
| Square Footage | 1,072 |
| Acres | 0.09 |
| Year Built | 2015 |
| Type | Residential |
| Sub-Type | Detached |
| Style | Bi-Level, Up/Down |
| Status | Active |

Community Information

| | |
|-------------|---------------------------|
| Address | 612 Aquitania Boulevard W |
| Subdivision | Garry Station |
| City | Lethbridge |
| County | Lethbridge |
| Province | Alberta |
| Postal Code | T1J 5G5 |

Amenities



| | |
|----------------|---|
| Parking Spaces | 2 |
| Parking | Alley Access, Concrete Driveway, Double Garage Attached, Driveway, Garage Door Opener, Rear Drive |
| # of Garages | 2 |

Interior

| | |
|-------------------|---|
| Interior Features | Breakfast Bar, Granite Counters, Jetted Tub, Open Floorplan, Separate Entrance |
| Appliances | Central Air Conditioner, Dishwasher, Microwave Hood Fan, Refrigerator, Stove(s), Washer/Dryer |
| Heating | Forced Air, Natural Gas |
| Cooling | Central Air |
| Has Basement | Yes |
| Basement | Finished, Full, Suite, Walk-Up To Grade |

Exterior

| | |
|-------------------|---|
| Exterior Features | Private Entrance, Uncovered Courtyard |
| Lot Description | Back Lane, Back Yard, City Lot, Front Yard, Garden, Interior Lot, Landscaped, Lawn, Low Maintenance Landscape |
| Roof | Asphalt Shingle |
| Construction | Concrete, Wood Frame |
| Foundation | Poured Concrete |

Additional Information

| | |
|----------------|-----------------|
| Date Listed | June 17th, 2025 |
| Days on Market | 55 |
| Zoning | R-M |

Listing Details

| | |
|----------------|---------------------------------|
| Listing Office | RE/MAX REAL ESTATE - LETHBRIDGE |
|----------------|---------------------------------|

Data is supplied by Pillar 9â„¢ MLSÂ® System. Pillar 9â„¢ is the owner of the copyright in its MLSÂ® System. Data is deemed reliable but is not guaranteed accurate by Pillar 9â„¢. The trademarks MLSÂ®, Multiple Listing ServiceÂ® and the associated logos are owned by The Canadian Real Estate Association (CREA) and identify the quality of services provided by real estate professionals who are members of CREA. Used under license.