

# \$129,900 - 1, 402 2 Avenue S, Lethbridge

MLS® #A2230996

**\$129,900**

0 Bedroom, 0.00 Bathroom,  
Commercial on 0.00 Acres

Downtown, Lethbridge, Alberta

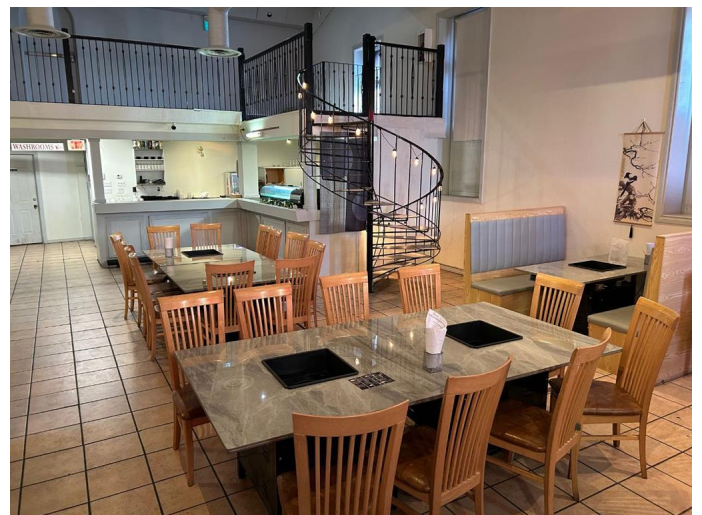
Hotpot and Sushi restaurant. You don't just order Hotpot, you EXPERIENCE it! Blossom All You Can Eat Hotpot and Sushi is a young, up and coming business that definitely serves a need on the Lethbridge restaurant menu. Featuring fresh, in-house made cuisine including sauces and broths for your favourite dishes. Located in a unique space in the Historic Number 1 Firehall (Alberta's oldest brick firehall building). In full operation since February 2023, and showing positive momentum. How about BellaBot the robot server? This could be the perfect opportunity for you and your family to step into a small business where the groundwork has already been done! Contact your preferred real estate agent for more details and viewings.

Built in 1890

## Essential Information

MLS® #	A2230996
Price	\$129,900
Bathrooms	0.00
Acres	0.00
Year Built	1890
Type	Commercial
Sub-Type	Business
Status	Active

## Community Information



Address	1, 402 2 Avenue S
Subdivision	Downtown
City	Lethbridge
County	Lethbridge
Province	Alberta
Postal Code	T1J0C3

### **Additional Information**

Date Listed	June 13th, 2025
Days on Market	52

### **Listing Details**

Listing Office	Royal LePage South Country - Lethbridge
----------------	---

Data is supplied by Pillar 9â„¢ MLS® System. Pillar 9â„¢ is the owner of the copyright in its MLS® System. Data is deemed reliable but is not guaranteed accurate by Pillar 9â„¢. The trademarks MLS®, Multiple Listing Service® and the associated logos are owned by The Canadian Real Estate Association (CREA) and identify the quality of services provided by real estate professionals who are members of CREA. Used under license.