

\$199,000 - 411, 6802 42 Street, Lloydminster

MLS® #A2231235

\$199,000

2 Bedroom, 2.00 Bathroom, 991 sqft

Residential on 0.00 Acres

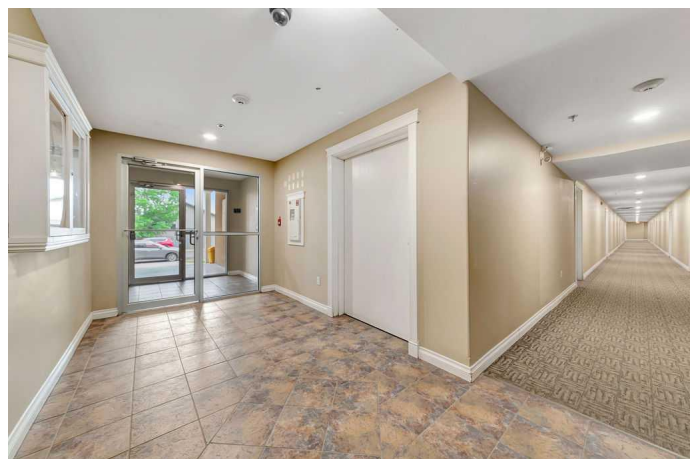
Parkview Estates, Lloydminster, Alberta

Make your home ownership dreams a reality with this 2-bed 2-bath top floor condo located in the beautiful Parkview Estates neighbourhood. Measuring just under 1,000 sq ft, this property boasts southern exposure and an open floor plan. The layout is ideal with bedrooms on either side of the living room for maximum privacy. The primary bedroom has a spacious walk-through closet and full ensuite. The functional kitchen has lots of counter space and ample cabinets. The in-suite laundry room includes storage space. Relax and enjoy the outdoor patio space with great 4th floor views. This unit comes with one underground parking stall and one outdoor parking stall. Holy Rosary High School and Ecole St Thomas are only 3 blocks away. Wal-Mart and other amenities are just a few blocks. Bud Miller Park is a 5 minute bike ride. Available for quick possession. Short notice showings will be accommodated. Call to view this terrific property!

Built in 2006

Essential Information

MLS® #	A2231235
Price	\$199,000
Bedrooms	2
Bathrooms	2.00
Full Baths	2
Square Footage	991



Acres	0.00
Year Built	2006
Type	Residential
Sub-Type	Apartment
Style	Single Level Unit
Status	Active

Community Information

Address	411, 6802 42 Street
Subdivision	Parkview Estates
City	Lloydminster
County	Lloydminster
Province	Alberta
Postal Code	T9V 2H5

Amenities

Amenities	Elevator(s), Parking, Visitor Parking
Parking Spaces	2
Parking	Stall, Underground

Interior

Interior Features	Open Floorplan
Appliances	Dishwasher, Dryer, Microwave Hood Fan, Refrigerator, Stove(s), Wall/Window Air Conditioner, Washer
Heating	In Floor, Hot Water
Cooling	Wall/Window Unit(s)
# of Stories	4

Exterior

Exterior Features	Balcony
Construction	Stucco

Additional Information

Date Listed	June 13th, 2025
Days on Market	2
Zoning	R4

Listing Details

Listing Office	RE/MAX OF LLOYDMINSTER
----------------	------------------------

Data is supplied by Pillar 9â„¢ MLS® System. Pillar 9â„¢ is the owner of the copyright in its MLS® System. Data is deemed reliable but is not guaranteed accurate by Pillar 9â„¢. The trademarks MLS®, Multiple Listing Service® and the associated logos are owned by The Canadian Real Estate Association (CREA) and identify the quality of services provided by real estate professionals who are members of CREA. Used under license.