

\$809,900 - 2156 21a Street, Coaldale

MLS® #A2231874

\$809,900

5 Bedroom, 3.00 Bathroom, 2,210 sqft

Residential on 0.18 Acres

NONE, Coaldale, Alberta

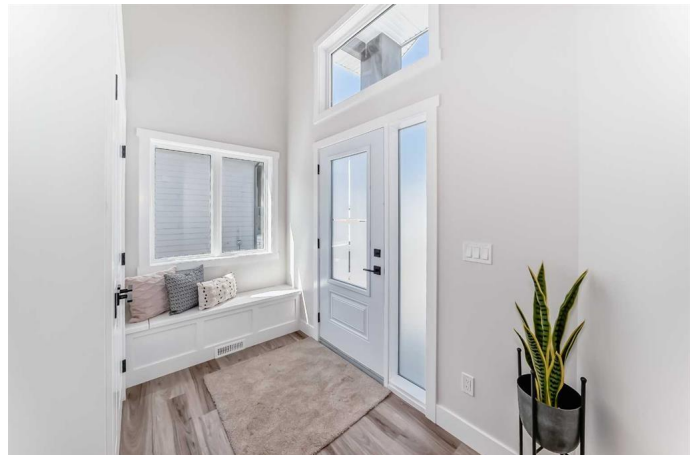
Welcome to Your Dream Home!

This brand-new, masterpiece by locally owned Grizzly Ridge Developments' offers everything you've been searching for. From its stunning modern design to its unbeatable functionality, this home truly has it all including a TRIPLE ATTACHED GARAGE, space for a SECOND DETACHED GARAGE off of paved alley, EAST facing rear deck and a full walkout basement with a wet bar.

Boasting 5 spacious bedrooms and 3 luxurious bathrooms, including a 5-piece spa-like ensuite with a massive soaking tub, every corner of this home is designed for comfort and elegance. The open-concept layout seamlessly blends living, dining, and kitchen spaces, creating the perfect environment for entertaining or relaxing with family.

The chef-inspired kitchen is a showstopper, featuring stone countertops, a walk-through pantry with beautiful built-in features, and high-end finishes. Adjacent is the elegant dining area, which flows into the inviting living room, complete with a gorgeous gas fireplace and direct access to the oversized back balcony, perfect for enjoying your morning coffee or hosting summer barbecues.

The fully finished walk-out basement is designed for entertainment, complete with a wet bar and easy access to your private backyard—a blank canvas awaiting your personal touch to transform it into the ultimate



getaway.
With a new home warranty and thoughtful craftsmanship by Grizzly Ridge, this home offers peace of mind and pride of ownership.

Donâ€™t miss your chance to own this exceptional property!

Built in 2025

Essential Information

| | |
|----------------|-------------------|
| MLS® # | A2231874 |
| Price | \$809,900 |
| Bedrooms | 5 |
| Bathrooms | 3.00 |
| Full Baths | 3 |
| Square Footage | 2,210 |
| Acres | 0.18 |
| Year Built | 2025 |
| Type | Residential |
| Sub-Type | Detached |
| Style | Modified Bi-Level |
| Status | Active |

Community Information

| | |
|-------------|-------------------|
| Address | 2156 21a Street |
| Subdivision | NONE |
| City | Coaldale |
| County | Lethbridge County |
| Province | Alberta |
| Postal Code | T1M 0G1 |

Amenities

| | |
|----------------|--|
| Parking Spaces | 6 |
| Parking | Concrete Driveway, Garage Door Opener, Garage Faces Front, Triple Garage Attached, Front Drive |
| # of Garages | 3 |

Interior

| | |
|-------------------|--|
| Interior Features | Bookcases, Breakfast Bar, Built-in Features, Ceiling Fan(s), Closet Organizers, Double Vanity, High Ceilings, No Animal Home, No Smoking Home, Open Floorplan, Pantry, Separate Entrance, Soaking Tub, Stone Counters, Storage, Sump Pump(s), Walk-In Closet(s), Wet Bar |
| Appliances | Dishwasher, Electric Stove, Microwave, Built-In Refrigerator, Built-In Range |
| Heating | Forced Air, Natural Gas |
| Cooling | Central Air |
| Fireplace | Yes |
| # of Fireplaces | 2 |
| Fireplaces | Gas, Great Room, Mantle, Basement, Family Room, Gas Starter |
| Has Basement | Yes |
| Basement | Exterior Entry, Finished, Full, Walk-Out |

Exterior

| | |
|-------------------|---------------------|
| Exterior Features | Private Entrance |
| Lot Description | Back Lane, City Lot |
| Roof | Asphalt Shingle |
| Construction | Composite Siding |
| Foundation | Poured Concrete |

Additional Information

| | |
|----------------|-----------------|
| Date Listed | June 17th, 2025 |
| Days on Market | 46 |
| Zoning | R1A |

Listing Details

| | |
|----------------|--|
| Listing Office | Century 21 Foothills South Real Estate |
|----------------|--|

Data is supplied by Pillar 9â„¢ MLS® System. Pillar 9â„¢ is the owner of the copyright in its MLS® System. Data is deemed reliable but is not guaranteed accurate by Pillar 9â„¢. The trademarks MLS®, Multiple Listing Service® and the associated logos are owned by The Canadian Real Estate Association (CREA) and identify the quality of services provided by real estate professionals who are members of CREA. Used under license.