

# \$539,900 - 9342 Lakeshore Court E, Grande Prairie

MLS® #A2231970

## \$539,900

5 Bedroom, 3.00 Bathroom, 1,581 sqft

Residential on 0.18 Acres

Crystal Lake Estates, Grande Prairie, Alberta

This beautiful modified bi-level home in Crystal Lake Estates is tucked away in a cul-de-sac on Lakeshore Court.

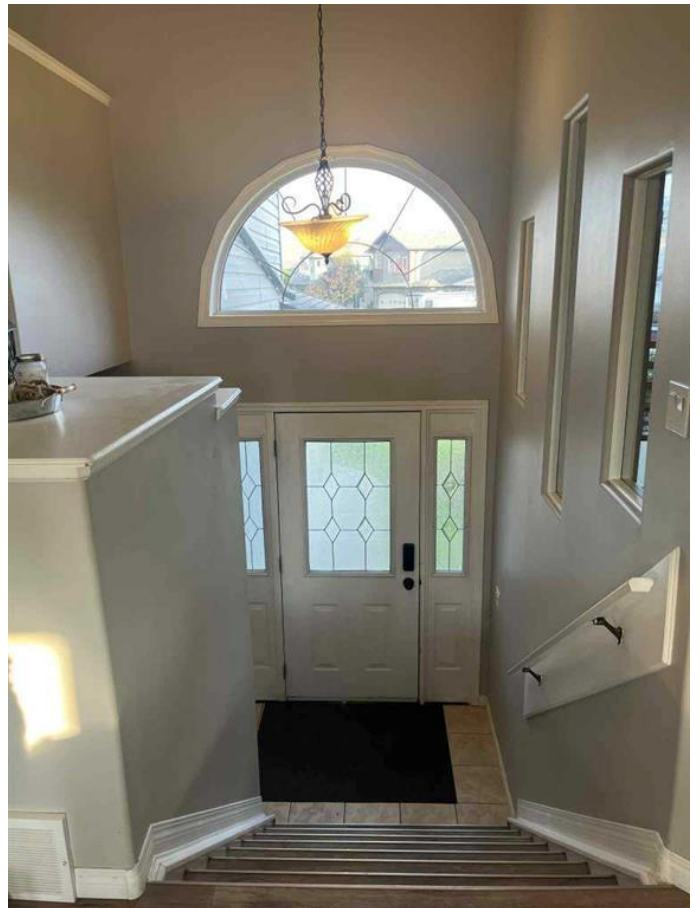
This home features five large bedrooms and a generously sized office facing the street. You'll immediately notice the extensive updates upon entering, including vinyl plank flooring and a recently renovated kitchen, ensuite, and master closet. The tall ceilings are perfect for displaying a grand Christmas tree during the holidays, and the wonderful gas fireplace is ideal for colder nights.

Enjoy the air-conditioned comfort during the summer, or head outside to the large backyard. It's big enough for a hot tub and a swimming pool, with plenty of space left for kids to play! Cedar fence was redone in 2024

Built in 2006

### Essential Information

MLS® #	A2231970
Price	\$539,900
Bedrooms	5
Bathrooms	3.00
Full Baths	3
Square Footage	1,581
Acres	0.18
Year Built	2006
Type	Residential
Sub-Type	Detached



Style	Modified Bi-Level
Status	Active

### Community Information

Address	9342 Lakeshore Court E
Subdivision	Crystal Lake Estates
City	Grande Prairie
County	Grande Prairie
Province	Alberta
Postal Code	T8X 1S4

### Amenities

Parking Spaces	4
Parking	Double Garage Attached
# of Garages	2

### Interior

Interior Features	Ceiling Fan(s), High Ceilings, Open Floorplan, Pantry, Soaking Tub
Appliances	Dishwasher, Dryer, Microwave Hood Fan, Refrigerator, Washer, Electric Oven
Heating	Forced Air, Natural Gas
Cooling	Central Air
Fireplace	Yes
# of Fireplaces	1
Fireplaces	Gas
Has Basement	Yes
Basement	Finished, Full

### Exterior

Exterior Features	Other
Lot Description	Back Yard, Cul-De-Sac, Landscaped, Pie Shaped Lot
Roof	Asphalt Shingle
Construction	Concrete, Vinyl Siding, Wood Frame
Foundation	Poured Concrete

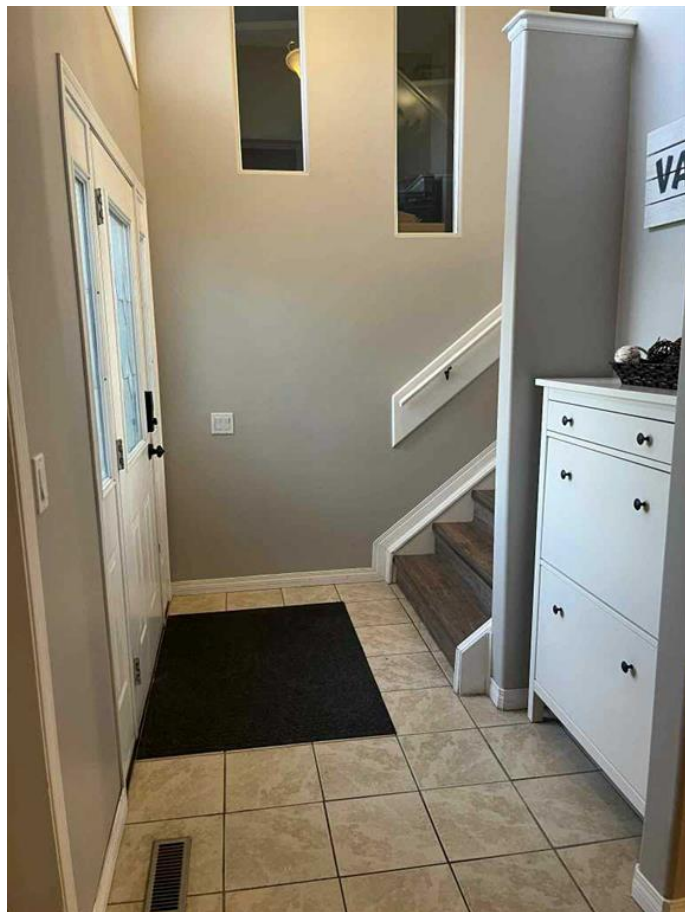
### Additional Information

Date Listed	June 17th, 2025
Days on Market	1
Zoning	RG

## Listing Details

Listing Office

2% Realty Edge AB



Data is supplied by Pillar 9â„¢ MLS® System. Pillar 9â„¢ is the owner of the copyright in its MLS® System. Data is deemed reliable but is not guaranteed accurate by Pillar 9â„¢. The trademarks MLS®, Multiple Listing Service® and the associated logos are owned by The Canadian Real Estate Association (CREA) and identify the quality of services provided by real estate professionals who are members of CREA. Used under license.