

\$499,999 - 53428 A Range Road 170, Edson

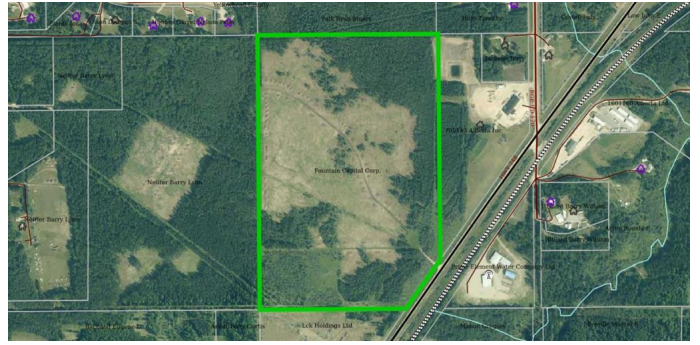
MLS® #A2233507

\$499,999

0 Bedroom, 0.00 Bathroom,
Land on 106.11 Acres

NONE, Edson, Alberta

106.11 acres on pavement (Hwy 748 E Bear Lake Hwy) and 4 miles from town center. 1 mile from town limits. Road built and right to building site.



Essential Information

| | |
|-----------|------------------|
| MLS® # | A2233507 |
| Price | \$499,999 |
| Bathrooms | 0.00 |
| Acres | 106.11 |
| Type | Land |
| Sub-Type | Residential Land |
| Status | Active |

Community Information

| | |
|-------------|------------------------|
| Address | 53428 A Range Road 170 |
| Subdivision | NONE |
| City | Edson |
| County | Yellowhead County |
| Province | Alberta |
| Postal Code | T7E 1V7 |

Amenities

| | |
|-----------|------|
| Utilities | None |
|-----------|------|

Additional Information

| | |
|----------------|-----------------|
| Date Listed | June 22nd, 2025 |
| Days on Market | 84 |
| Zoning | RD |

Listing Details

Listing Office RE/MAX BOXSHAW FOUR REALTY

Data is supplied by Pillar 9â„¢ MLS® System. Pillar 9â„¢ is the owner of the copyright in its MLS® System. Data is deemed reliable but is not guaranteed accurate by Pillar 9â„¢. The trademarks MLS®, Multiple Listing Service® and the associated logos are owned by The Canadian Real Estate Association (CREA) and identify the quality of services provided by real estate professionals who are members of CREA. Used under license.