

\$749,990 - 48 Saddleland Close Ne, Calgary

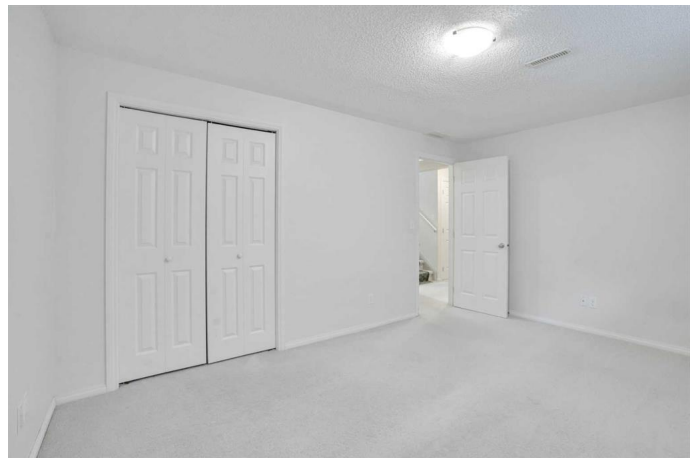
MLS® #A2236224

\$749,990

6 Bedroom, 4.00 Bathroom, 2,372 sqft
Residential on 0.09 Acres

Saddle Ridge, Calgary, Alberta

Welcome to the stunning 48 Saddleland Close, a remarkable home offering over 2300+. This exceptional property boasts 6 spacious bedrooms, 3.5 well-appointed bathrooms, and 2 fully equipped kitchens—truly a WOW factor! As you step into the main floor, you'll be greeted by an abundance of natural light cascading through the windows. The formal living room/flex room is perfect for entertaining or relaxing, while the cozy family room showcases a warm gas fireplace, creating an inviting atmosphere for gatherings. The chef's kitchen is a dream come true, featuring a generous island with eating space, and flows seamlessly into the charming dining area, which opens up to a magnificent full-sized deck—ideal for outdoor dining and summer BBQs. Additional highlights include a walk-through pantry, a convenient laundry room, and a stylish powder room. Venture upstairs to discover an expansive bonus room that offers endless possibilities for recreation or a home office. The upper level also accommodates 4 generously sized bedrooms, two of which share a modern full bathroom, while the master suite is a true retreat, complete with a luxurious ensuite featuring a soaker tub and an impressive walk-in closet. The fully finished basement (illegal), with its separate entrance, adds even more living space and versatility, featuring a cozy family room, a second kitchen—perfect for guests or extended family, 2 additional bedrooms, and a tastefully



designed full bathroom. Donâ€™t forget the double attached garage and the expansive three-car parking driveway, making it easy for friends and family to visit. This extraordinary home is a must-seeâ€”schedule your viewing today!

Built in 2005

Essential Information

MLS® #	A2236224
Price	\$749,990
Bedrooms	6
Bathrooms	4.00
Full Baths	3
Half Baths	1
Square Footage	2,372
Acres	0.09
Year Built	2005
Type	Residential
Sub-Type	Detached
Style	2 Storey
Status	Active

Community Information

Address	48 Saddleland Close Ne
Subdivision	Saddle Ridge
City	Calgary
County	Calgary
Province	Alberta
Postal Code	T3J 5J5

Amenities

Parking Spaces	5
Parking	Double Garage Attached
# of Garages	2

Interior

Interior Features	No Animal Home, No Smoking Home
-------------------	---------------------------------

Appliances	Dishwasher, Electric Stove, Washer/Dryer, Window Coverings
Heating	Forced Air
Cooling	None
Fireplace	Yes
# of Fireplaces	1
Fireplaces	Gas
Has Basement	Yes
Basement	Exterior Entry, Finished, Full

Exterior

Exterior Features	Other
Lot Description	Rectangular Lot
Roof	Asphalt Shingle
Construction	Wood Frame, See Remarks
Foundation	Poured Concrete

Additional Information

Date Listed	July 3rd, 2025
Days on Market	10
Zoning	R-G

Listing Details

Listing Office	PREP Realty
----------------	-------------

Data is supplied by Pillar 9â„¢ MLS® System. Pillar 9â„¢ is the owner of the copyright in its MLS® System. Data is deemed reliable but is not guaranteed accurate by Pillar 9â„¢. The trademarks MLS®, Multiple Listing Service® and the associated logos are owned by The Canadian Real Estate Association (CREA) and identify the quality of services provided by real estate professionals who are members of CREA. Used under license.