

\$199,900 - 9509 102 Street, Grande Prairie

MLS® #A2239570

\$199,900

3 Bedroom, 2.00 Bathroom, 775 sqft

Residential on 0.01 Acres

Swanavon., Grande Prairie, Alberta

Beautiful Swanavon location! Just steps from the Bear Creek walking trails and only minutes from Muskoseepi Park. Enjoy the convenience of being within walking distance to downtown shopping, services, and entertainment. This home offers 775 sq ft of main floor living space featuring 2 bedrooms, a cozy living room, kitchen, and full bathroom. The basement is partially finished and includes an additional bedroom, a , laundry area, and a second bathroom. Book your showing today!

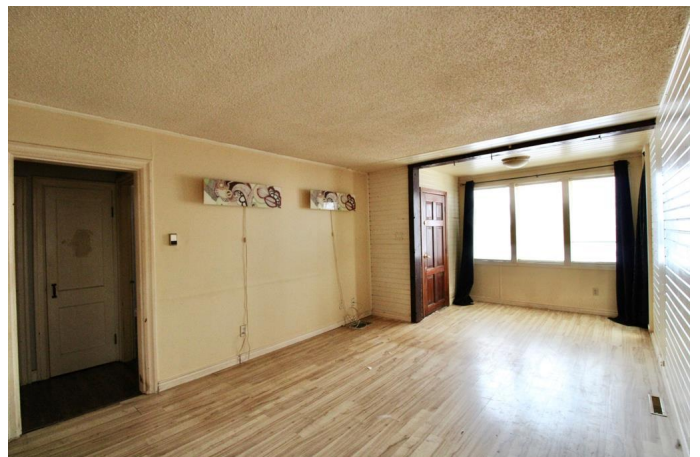
Built in 1940

Essential Information

MLS® #	A2239570
Price	\$199,900
Bedrooms	3
Bathrooms	2.00
Full Baths	2
Square Footage	775
Acres	0.01
Year Built	1940
Type	Residential
Sub-Type	Detached
Style	Bungalow
Status	Active

Community Information

Address	9509 102 Street
Subdivision	Swanavon.



City	Grande Prairie
County	Grande Prairie
Province	Alberta
Postal Code	T8V 2T7

Amenities

Parking Spaces	3
Parking	Alley Access, Gravel Driveway, Off Street, Parking Pad

Interior

Interior Features	See Remarks
Appliances	Refrigerator, Stove(s), Washer/Dryer
Heating	Forced Air
Cooling	None
Has Basement	Yes
Basement	Partial, Partially Finished

Exterior

Exterior Features	Private Yard
Lot Description	Back Yard, City Lot, Few Trees
Roof	Asphalt Shingle
Construction	Concrete, Wood Frame
Foundation	Poured Concrete

Additional Information

Date Listed	July 14th, 2025
Days on Market	16
Zoning	RR

Listing Details

Listing Office	Sutton Group Grande Prairie Professionals
----------------	---

Data is supplied by Pillar 9â„¢ MLS® System. Pillar 9â„¢ is the owner of the copyright in its MLS® System. Data is deemed reliable but is not guaranteed accurate by Pillar 9â„¢. The trademarks MLS®, Multiple Listing Service® and the associated logos are owned by The Canadian Real Estate Association (CREA) and identify the quality of services provided by real estate professionals who are members of CREA. Used under license.