

\$299,999 - Rr 223, Rural Northern Lights, County of

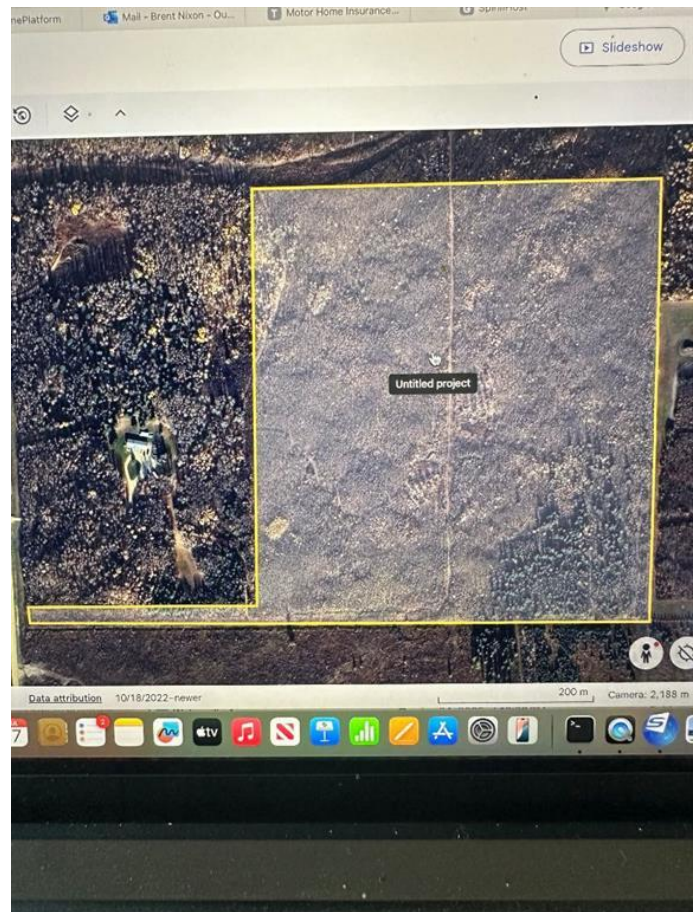
MLS® #A2241042

\$299,999

0 Bedroom, 0.00 Bathroom,
Land on 69.10 Acres

NONE, Rural Northern Lights, County of,
Alberta

Just Minutes North of Peace River in the Weberville Area This 69 ACRES has just come up for sale This property original use was to be an acreage development but that never happened so now an acreage this large would be very well suited for a small farming operation or a very private single family acreage. There are trails through out the property with both re-growth aspen and old growth spruce this would make the perfect family home to make memories for a life time. RARE OPPORTUNITY CALL TODAY FOR YOUR OWN PRIVATE TOUR.



Essential Information

| | |
|-----------|--------------|
| MLS® # | A2241042 |
| Price | \$299,999 |
| Bathrooms | 0.00 |
| Acres | 69.10 |
| Type | Land |
| Sub-Type | Recreational |
| Status | Active |

Community Information

| | |
|-------------|----------------------------------|
| Address | Rr 223 |
| Subdivision | NONE |
| City | Rural Northern Lights, County of |
| County | Northern Lights, County of |
| Province | Alberta |

Postal Code T8S 1T1

Amenities

Utilities None

Additional Information

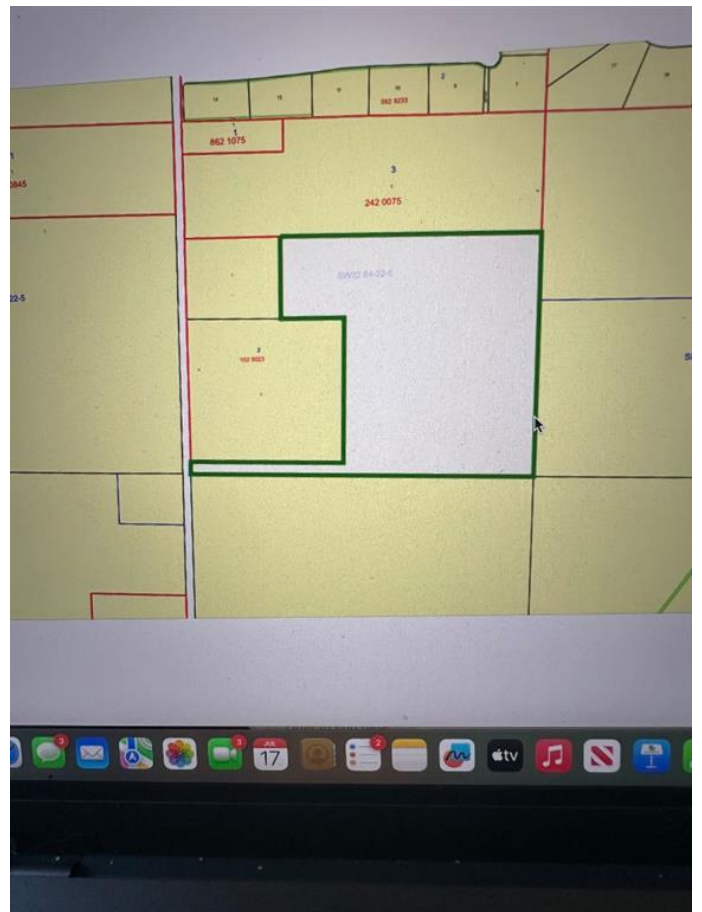
Date Listed July 16th, 2025

Days on Market 13

Zoning Residential

Listing Details

Listing Office Royal LePage Valley Realty



Data is supplied by Pillar 9â„¢ MLSÂ® System. Pillar 9â„¢ is the owner of the copyright in its MLSÂ® System. Data is deemed reliable but is not guaranteed accurate by Pillar 9â„¢. The trademarks MLSÂ®, Multiple Listing ServiceÂ® and the associated logos are owned by The Canadian Real Estate Association (CREA) and identify the quality of services provided by real estate professionals who are members of CREA. Used under license.