

# \$369,000 - N/A, Calgary

MLS® #A2241190

**\$369,000**

0 Bedroom, 0.00 Bathroom,  
Commercial on 0.00 Acres

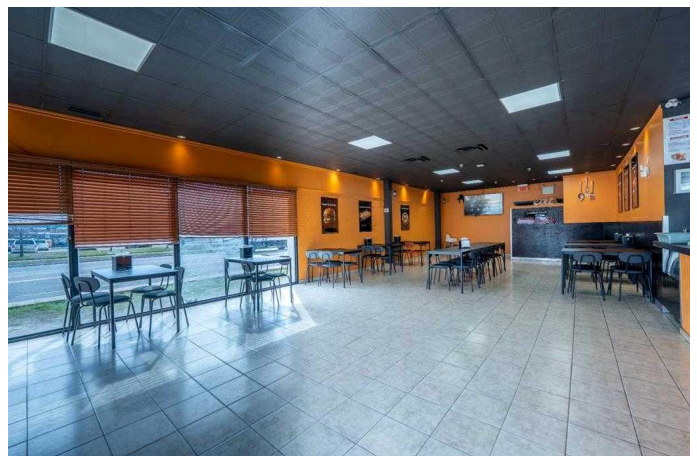
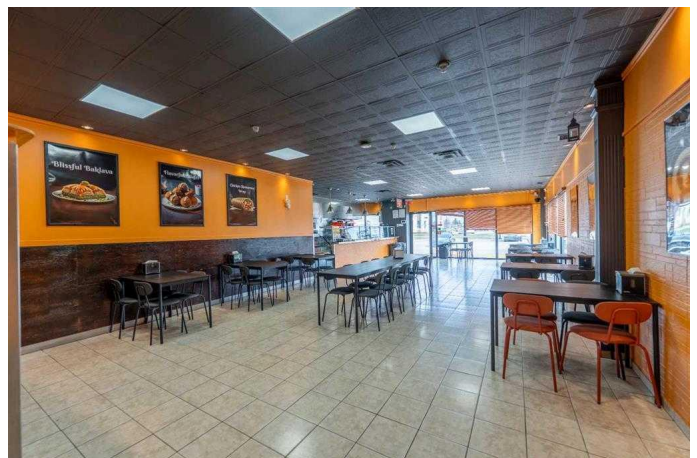
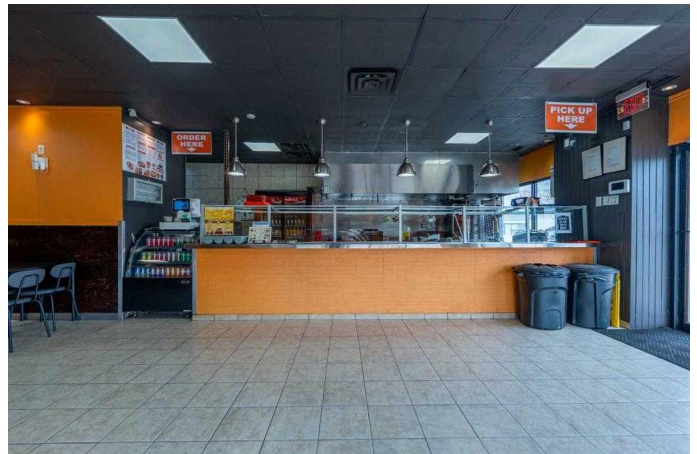
N/A, Calgary, Alberta

Take over a well-established, highly-rated restaurant with a proven 13+ year track record and a stellar reputation—boasting over 1k Google reviews. This busy Shawarma & Donair spot is a go-to lunch destination, especially for nearby professionals, and enjoys strong repeat business.

Located on a high-traffic main road with excellent visibility, the space features 50 seats, a large open dining area, and an installed sound system, making it ideal for dine-in service, private functions, or community events. The restaurant is clean, freshly painted, and shows pride of ownership.

With very low rent, no franchise restrictions, and a trained team in place, it's a turnkey operation for any buyer looking to step into a solid, revenue-generating business. There's also huge untapped potential to add a sheesha lounge, ghost kitchen, or expand the menu to increase income.

Sale includes business and lease assignment only — no real estate. NDA required. Please do not visit or approach staff directly.



## Essential Information

MLS® #	A2241190
Price	\$369,000

Bathrooms	0.00
Acres	0.00
Type	Commercial
Sub-Type	Retail
Status	Active

### Community Information

Address	N/A
Subdivision	N/A
City	Calgary
County	Calgary
Province	Alberta

### Additional Information

Date Listed	July 18th, 2025
Days on Market	1

### Listing Details

Listing Office	TREC The Real Estate Company
----------------	------------------------------

Data is supplied by Pillar 9â„¢ MLS® System. Pillar 9â„¢ is the owner of the copyright in its MLS® System. Data is deemed reliable but is not guaranteed accurate by Pillar 9â„¢. The trademarks MLS®, Multiple Listing Service® and the associated logos are owned by The Canadian Real Estate Association (CREA) and identify the quality of services provided by real estate professionals who are members of CREA. Used under license.