

# \$949,000 - 1956 Kelwood Drive Sw, Calgary

MLS® #A2245234

**\$949,000**

3 Bedroom, 2.00 Bathroom, 1,257 sqft

Residential on 0.16 Acres

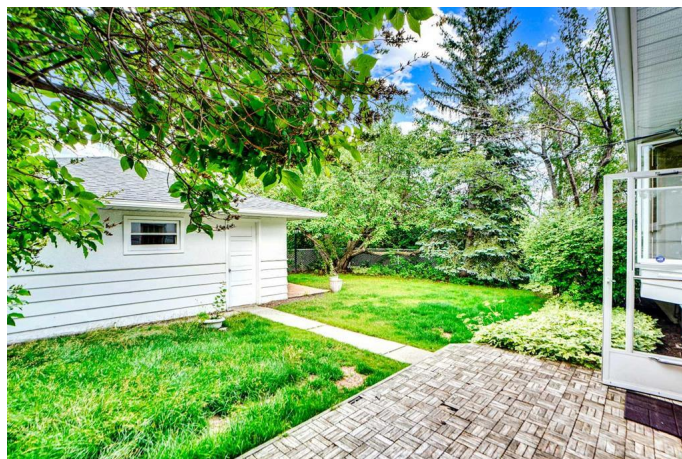
Glendale., Calgary, Alberta

Nestled in the well-established community of Glendale and set on a generous 7,179 sq ft corner lot, this beautifully maintained 1950's bungalow offers incredible potential to become your ideal family home. Originally a 3-bedroom layout, one bedroom has been thoughtfully converted into a cozy den or home office. The main floor features spacious living and dining areas, a bright kitchen with stainless steel appliances, two comfortable bedrooms, and a charming 3-piece bathroom with classic 1950s retro tile. The fully developed basement includes a large family room with a fireplace, a versatile den/flex room, a 4-piece bathroom, and a dedicated laundry area. Outside, you'll love the mature trees in the front yard and the expansive backyard with a patio, perfect for outdoor gatherings, plus a double detached garage for added convenience. Ideally located near parks, schools, shopping, public transit, and offering easy access to both 17th Avenue and Sarcee Trail.

Built in 1954

## Essential Information

MLS® #	A2245234
Price	\$949,000
Bedrooms	3
Bathrooms	2.00
Full Baths	2
Square Footage	1,257



Acres	0.16
Year Built	1954
Type	Residential
Sub-Type	Detached
Style	Bungalow
Status	Active

### **Community Information**

Address	1956 Kelwood Drive Sw
Subdivision	Glendale.
City	Calgary
County	Calgary
Province	Alberta
Postal Code	T3E 3Z3

### **Amenities**

Parking Spaces	2
Parking	Double Garage Detached
# of Garages	2

### **Interior**

Interior Features	Built-in Features, Dry Bar, French Door, Soaking Tub
Appliances	Electric Stove, Garage Control(s), Microwave Hood Fan, Refrigerator, Window Coverings, Trash Compactor
Heating	Forced Air
Cooling	None
Fireplace	Yes
# of Fireplaces	1
Fireplaces	Gas
Has Basement	Yes
Basement	Finished, Full

### **Exterior**

Exterior Features	Private Entrance, Private Yard
Lot Description	Back Lane, Back Yard, Front Yard, Fruit Trees/Shrub(s), Irregular Lot, Landscaped, Lawn, Many Trees, Sloped Up
Roof	Asphalt Shingle
Construction	Stucco, Wood Frame, Wood Siding
Foundation	Poured Concrete

**Additional Information**

Date Listed	August 1st, 2025
Days on Market	1
Zoning	R-CG

**Listing Details**

Listing Office	Real Estate Professionals Inc.
----------------	--------------------------------

Data is supplied by Pillar 9â„¸ MLSÂ® System. Pillar 9â„¸ is the owner of the copyright in its MLSÂ® System. Data is deemed reliable but is not guaranteed accurate by Pillar 9â„¸. The trademarks MLSÂ®, Multiple Listing ServiceÂ® and the associated logos are owned by The Canadian Real Estate Association (CREA) and identify the quality of services provided by real estate professionals who are members of CREA. Used under license.