

# \$714,900 - 39 Memorial Parkway, Rural Red Deer County

---

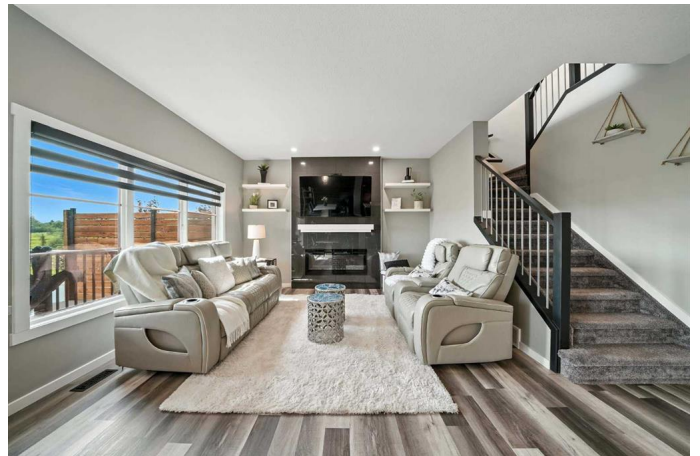
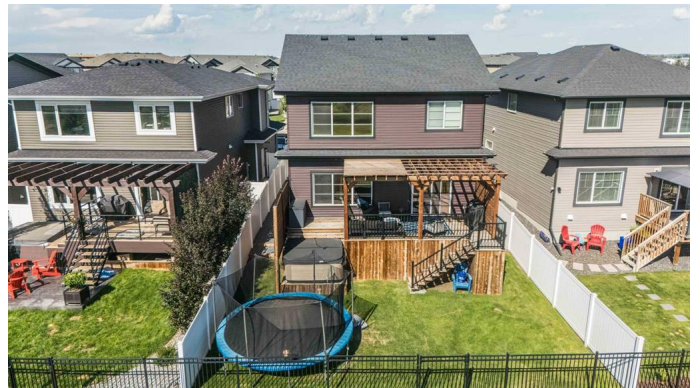
MLS® #A2247950

**\$714,900**

5 Bedroom, 4.00 Bathroom, 2,080 sqft  
Residential on 0.09 Acres

Liberty Landing, Rural Red Deer County,  
Alberta

Visit REALTOR® website for additional information. This exceptional custom-built residence with A/C showcases over \$100,000 in premium upgrades and an unparalleled attention to detail. The heated double attached garageâ€™ finished with epoxy flooringâ€™ doubles as a refined man cave or extra storage, while the homeâ€™s prime location backs directly onto tranquil green space. In sought-after Liberty Landing, Red Deer County â€™close to everything you need and enjoying the advantage of lower taxes. Step inside to a bright, open-concept main level with 9 foot ceilings & beautiful views. The living room, anchored by a stylish fireplace, flows seamlessly into the chef-inspired kitchen featuring a large island with breakfast bar, gleaming quartz countertops, upgraded tile backsplash, walk-in pantry, and an elegant dining area with glass doors opening to the deck for enjoying the outdoors. The main level also has a mudroom and 2 pc bath for convenience. Upstairs, a versatile loft connects to 3 bedrooms and 2 full baths, including the luxurious primary suite with walk-in closet and spa-inspired 5-piece ensuite. The convenience of an upper-level laundry adds to the thoughtful design. The fully finished lower level offers a spacious recreation room with a fireplace, & two more



bedrooms –perfect for guests or extended family. Outside, the partially covered deck invites year-round relaxation while capturing the stunning, uninterrupted views of the surrounding green space. This home seamlessly blends refined design, modern comfort, and a coveted location –offering an extraordinary lifestyle

Built in 2019

**Essential Information**

|                |             |
|----------------|-------------|
| MLS® #         | A2247950    |
| Price          | \$714,900   |
| Bedrooms       | 5           |
| Bathrooms      | 4.00        |
| Full Baths     | 3           |
| Half Baths     | 1           |
| Square Footage | 2,080       |
| Acres          | 0.09        |
| Year Built     | 2019        |
| Type           | Residential |
| Sub-Type       | Detached    |
| Style          | 2 Storey    |
| Status         | Active      |

**Community Information**

|             |                       |
|-------------|-----------------------|
| Address     | 39 Memorial Parkway   |
| Subdivision | Liberty Landing       |
| City        | Rural Red Deer County |
| County      | Red Deer County       |
| Province    | Alberta               |
| Postal Code | T4E 3B7               |

**Amenities**

|                |  |
|----------------|--|
| Parking Spaces | 4  |
| Parking        | Double Garage Attached, Front Drive, Heated Garage |
| # of Garages   | 2  |

**Interior**

|                   |  |
|-------------------|--|
| Interior Features | Breakfast Bar, Closet Organizers, Double Vanity, Kitchen Island, No Smoking Home, Open Floorplan, Pantry, Quartz Counters, Recessed Lighting, Soaking Tub, Sump Pump(s), Walk-In Closet(s) |
| Appliances        | Dishwasher, Electric Range, Microwave Hood Fan, Refrigerator, Washer/Dryer, Water Softener, Window Coverings   |
| Heating           | Fireplace(s), Forced Air   |
| Cooling           | Central Air  |
| Fireplace         | Yes  |
| # of Fireplaces   | 2  |
| Fireplaces        | Electric   |
| Has Basement      | Yes  |
| Basement          | Finished, Full   |

## Exterior

|                   |   |
|-------------------|---|
| Exterior Features | Private Entrance, Private Yard, Rain Gutters  |
| Lot Description   | Back Yard, Backs on to Park/Green Space, Front Yard, Landscaped, Lawn, Level, No Neighbours Behind, Private |
| Roof              | Asphalt Shingle   |
| Construction      | Concrete, Stone, Vinyl Siding   |
| Foundation        | Poured Concrete   |

## Additional Information

|                |                   |
|----------------|-------------------|
| Date Listed    | August 12th, 2025 |
| Days on Market | 34                |
| Zoning         | DCD-9A            |

## Listing Details

|                |                       |
|----------------|-----------------------|
| Listing Office | PG Direct Realty Ltd. |
|----------------|-----------------------|

Data is supplied by Pillar 9â„¢ MLS® System. Pillar 9â„¢ is the owner of the copyright in its MLS® System. Data is deemed reliable but is not guaranteed accurate by Pillar 9â„¢. The trademarks MLS®, Multiple Listing Service® and the associated logos are owned by The Canadian Real Estate Association (CREA) and identify the quality of services provided by real estate professionals who are members of CREA. Used under license.