

# \$624,900 - 38 Cole Way, Sylvan Lake

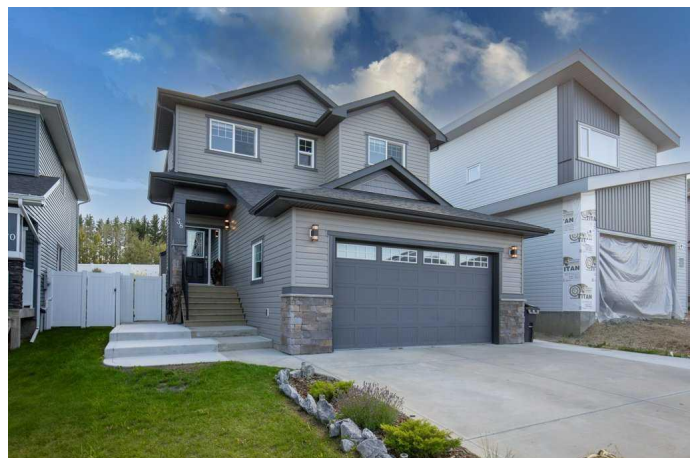
MLS® #A2249387

**\$624,900**

4 Bedroom, 4.00 Bathroom, 1,781 sqft  
Residential on 0.10 Acres

Crestview, Sylvan Lake, Alberta

The curb appeal of this BEAUTIFUL TWO STORY HOME offers an earthy color scheme, accented with bold stone pillars. The double attached garage is heated and provides plenty of indoor parking. Lovely laminate flooring leads you through the hub of the home, clean and low maintenance. The kitchen features crisp white cabinetry, stainless steel appliances, exquisite quartz countertops, and an island for additional seating. The gorgeous gas fireplace offers a cozy comfort to the large living room. Dine inside or step thru the garden to enjoy the expansive tiered patio and cement pad. Bordering this beautiful backyard is a custom retaining wall, complimented with mature trees and shrubs. Backing on to a green space gives you that added peace and quiet. After a long day, retreat to the second level. The loft bonus area works beautifully as a home office or TV room. The primary suite is spacious and boasts a 5-piece ensuite and wonderful walk-in closet. Two additional bedrooms and a 4-piece bathroom provide close comfort for the children. Laundry can also be found on this level for added convenience. Head down to the basement to enjoy the fantastic family room. The floors feature a striking epoxy stain finish with in-floor heating for added comfort. An additional bedroom is perfect for accommodating company. The 3-piece bathroom boasts a large tiled shower with a beautiful pebble stone base. Additional upgrades include Air Conditioning, a water softener, sound system,



and central vac. Crestview is a family friendly neighborhood with close proximity to schools, parks, and walking trails. What more could you wish for? Take your tour today!

Built in 2016

### Essential Information

MLS® #	A2249387
Price	\$624,900
Bedrooms	4
Bathrooms	4.00
Full Baths	3
Half Baths	1
Square Footage	1,781
Acres	0.10
Year Built	2016
Type	Residential
Sub-Type	Detached
Style	2 Storey
Status	Active

### Community Information

Address	38 Cole Way
Subdivision	Crestview
City	Sylvan Lake
County	Red Deer County
Province	Alberta
Postal Code	T4S 0L5

### Amenities

Parking Spaces	4
Parking	Double Garage Attached
# of Garages	2

### Interior

Interior Features	Central Vacuum, Kitchen Island, Pantry, Quartz Counters
Appliances	Central Air Conditioner, Dishwasher, Refrigerator, Washer/Dryer, Stove(s), Water Softener

Heating	Forced Air
Cooling	Central Air
Fireplace	Yes
# of Fireplaces	1
Fireplaces	Gas
Has Basement	Yes
Basement	Finished, Full

## Exterior

Exterior Features	Private Yard
Lot Description	Backs on to Park/Green Space, Landscaped, Lawn, Street Lighting, Back Yard, No Neighbours Behind
Roof	Asphalt Shingle
Construction	Mixed
Foundation	Poured Concrete

## Additional Information

Date Listed	August 19th, 2025
Days on Market	72
Zoning	R5

## Listing Details

Listing Office	RE/MAX real estate central alberta
----------------	------------------------------------

Data is supplied by Pillar 9â„¸ MLSÂ® System. Pillar 9â„¸ is the owner of the copyright in its MLSÂ® System. Data is deemed reliable but is not guaranteed accurate by Pillar 9â„¸. The trademarks MLSÂ®, Multiple Listing ServiceÂ® and the associated logos are owned by The Canadian Real Estate Association (CREA) and identify the quality of services provided by real estate professionals who are members of CREA. Used under license.